



**WASHINGTON COUNTY CONSOLIDATED
COMMUNICATIONS AGENCY**

**ANNUAL COMPREHENSIVE
FINANCIAL REPORT**

Fiscal Year Ended June 30, 2021

Prepared by:
WCCCA Finance Department

Washington County Consolidated
Communications Agency
17911 NW Evergreen Parkway
Beaverton, Oregon 97006

Phone: (503)690-4911 Fax: (503)531-
0186
www.wccca.com

This page is intentionally left blank.

Washington County Consolidated Communications Agency

Table of Contents Fiscal Year Ended June 30, 2021

Introductory Section	Page
Letter of Transmittal.....	2
Certificate of Achievement for Excellence in Financial Reporting.....	11
Organizational Chart.....	12
Board of Commissioners & Budget Committee Citizen Representatives.....	13
Chief Executive Officers Board and WCCCA Executive Management.....	14
Financial Section	
Independent Auditor's Report	18
Management's Discussion and Analysis	24
Basic Financial Statements	
Government-Wide Financial Statements	
Statement of Net Position.....	34
Statement of Activities.....	35
Fund Financial Statements	
Balance Sheet - Governmental Funds.....	36
Reconciliation of the Balance Sheet of the Governmental Funds to the Statement of Net Position.....	37
Statement of Revenues, Expenditures, Other Financing Sources (Uses), and Changes in Fund Balances - Governmental Funds.....	38
Reconciliation of the Statement of Revenues, Expenditures, and Changes in Fund Balances to the Statement of Activities.....	39
Statement of Revenues, Expenditures, Other Financing Uses, and Changes in Fund Balances - Budget and Actual - General Fund.....	40
Notes to the Basic Financial Statements.....	41
Required Supplementary Information	
Schedule of the Agency's Proportionate Share of Net Pension(Asset)/Liability.....	70
Schedule of the Agency's Pension Plan Contributions.....	71
Schedule of the Changes in the Agency's Total OPEB Liability and Related Ratios....	72
Schedule of Proportionate Share of Net OPEB Liability/(Asset).....	73
Schedule of OPEB PERS RHIA Plan Contributions.....	74
Notes to the Required Supplementary Information.....	75
Other Supplementary Information	
Schedule of Revenues, Expenditures, Other Financing Sources, and Changes in Fund Balances - Budget and Actual - Capital Projects Fund.....	82
Statistical Section	
Net Position by Component - Last Ten Fiscal Years.....	86
Changes in Net Position - Last Ten Fiscal Years.....	87
Fund Balances, Governmental Funds - Last Ten Fiscal Years.....	88
Changes in Fund Balances, Governmental Funds - Last Ten Fiscal Years.....	89
Principal Contract Revenue Payers - Last Ten Fiscal Years.....	90
Demographic and Economic Statistics - Last Ten Fiscal Years.....	91
Major Employment Sectors - Current Year and Nine Years Ago.....	92
Principal Taxpayers Within the County - Current Year and Nine Years Ago.....	93
Full-time Equivalent Agency Employees by Function - Last Ten Fiscal Years.....	94
Operating Indicator by Function - Last Ten Fiscal Years.....	95
Capital Asset Statistics by Function - Last Ten Fiscal Years.....	96
Independent Auditor's Report on Compliance and Internal Control over Financial Reporting Based on an Audit of Financial Statements Performed in Accordance with Oregon State Regulations	100

This page is intentionally left blank.

Introductory Section

This page is intentionally left blank.



Washington County Consolidated Communications Agency

December 22, 2021

**Rob Drake, Chair, Members of the Board of Commissioners
and WCCCA Stakeholders**

We are pleased to submit the Annual Comprehensive Financial Report of Washington County Consolidated Communications Agency (WCCCA or Agency) for the fiscal year ended June 30, 2021. State law requires that every general-purpose local government publish, within six months of the close of each fiscal year, a complete set of audited financial statements. This report is published to fulfill that requirement for the fiscal year ended June 30, 2021.

Management assumes full responsibility for the completeness and reliability of the information contained in this report, based upon a comprehensive framework of internal control that it has established for this purpose. Because the cost of internal control should not exceed anticipated benefits, the objective is to provide reasonable, rather than absolute, assurance that the financial statements are free of any material misstatements.

Talbot, Korvola and Warwick, LLP has issued an unmodified (“clean”) opinion on the Agency’s financial statements for the year ended June 30, 2021. The Independent Auditor’s Report is located at the front of the financial section of this report.

Management’s Discussion and Analysis (MD&A) immediately follows the Independent Auditor’s Report and provides a narrative introduction, overview, and analysis of the basic financial statements. MD&A complements this letter of transmittal and should be read in conjunction with it.

Profile of the Government

The Agency is a local government established to provide countywide dispatch operations for 9-1-1 call answering and all fire, emergency medical services (EMS) and law enforcement dispatching. The Agency is an Oregon Revised Statutes (ORS) Chapter 190 Intergovernmental Agency established to provide 9-1-1 service and public safety communications for police, fire, and EMS in Washington County, Oregon. The Agency operates under the authority of ORS 190.010 and is established as a 9-1-1 jurisdiction in accordance with ORS 401.710 to 401.790

As a Chapter 190 organization, the Agency is effectively a partnership established and governed by the following governments: Washington County; City of Hillsboro; City of Beaverton; Tualatin Valley Fire and Rescue; City of Tigard; City of Tualatin; City of Forest Grove; City of Sherwood; City of Cornelius; City of King City; City of Gaston; City of North Plains; Banks Fire District Number 13; City of Durham; City of Banks; Cornelius Rural Fire District; and Gaston Rural Fire District. The Agency's Board of Commissioners is comprised of one representative from each of these participating jurisdictions.

The Agency dispatches emergency services personnel to an area encompassing over 900 square miles. The area includes all of Washington County, a portion of northwest Clackamas County, a portion of Yamhill County surrounding the Cities of Newberg & Dundee and portions of the western area of Multnomah County contiguous with the boundaries of Tualatin Valley Fire and Rescue.

The Board of Commissioners of the Agency is responsible for the appointment of the Director, strategic planning, establishment of Agency service levels and performance standards, adoption of the annual budget, and approval of all contracts over \$125,000.

The Chief Executive Officers (CEO) Board's function is to provide oversight of and assistance to the Director in Agency operational matters; consider and make recommendations to the full Board on budgetary issues; contracts over \$50,000 and up to \$125,000; salary levels, labor negotiations; approve policies and strategies to meet established Agency service levels; serve as the Local Contract Review Board; and provide for an annual audit of the Agency's finances. The CEO Board is comprised of the Chair of the Board of Commissioners, whom shall be the Chair of the Board and the CEO Board, the Chief Administrative Officers or their designees from the two (2) largest Agency members (as determined by the user fee contribution schedule) and two additional Chief Administrative Officer members who shall be appointed at-large by the

Voting Board.

On an annual basis, the Agency prepares a budget for its funds, all of which conduct governmental activities. Although not subject to the State of Oregon budget law, the Agency chooses to follow the defined processes established in that law. Anticipated revenues and planned expenditures are estimated by management, reviewed by the CEO Board and proposed to the Budget Committee. Once the Budget Committee has approved the appropriations for the upcoming fiscal year, a public hearing is held before the Board of Commissioners (the Board). The Board may make changes within defined limits and adopts the budget for all funds by resolution. Upon adoption, the Agency is required to operate within the established category levels of appropriations as stated in the resolution: personnel services, materials and services, capital outlay. Any changes that are necessary at the category level of the budget must be approved by the Board by resolution.

WCCCA's Board of Commissioners has established a mission statement for the Agency, which reflects WCCCA's commitment to providing quality services to all of its customers: "*WCCCA is committed to providing timely, efficient and compassionate communication services to all citizens through innovation, employee excellence, and partnerships with public-safety providers.*" With this mission in mind, and as a high-reliability, learning organization, WCCCA strives to achieve excellence in emergency communications through support of employees, strategic involvement of member agencies, the efficiency of partnerships, comprehensive training, in-depth attention to quality assurance programs and vision toward the future.

Local Economy

Washington County (the County) has the second largest population of Oregon counties with a population estimate of 620,080 according to Portland State University. The County's population annual growth over the last ten years was 1.5%, behind only Deschutes County. The County's population includes two of the state's largest cities, Hillsboro and Beaverton. If the population of Washington County's unincorporated area was ranked among cities, it would be Oregon's second largest city.

The Washington County area serves as the home to internationally recognized companies such as Intel, Nike and Genentech,. Top metropolitan area employers include Intel, Nike, Providence St. Vincent Hospital, Target Stores, Tektronix, Home Depot, Kaiser Permanente, Rite Aid Corporation, and Tuality Healthcare, exclusive of large government employers. The top taxpayers within Washington County are Intel, Nike Inc.,

Portland General Electric, Pacific Realty Associates, NW Natural Gas, Comcast Corporation, Verizon Communications, Genentech, Inc., LAM Research Corporation, and BV Centercal LLC.

As an ORS 190 organization, the Agency is funded primarily by user fees from the participating jurisdictions and the State of Oregon levied 9-1-1 telephone excise taxes. Beginning January 1, 2020, the state mandated 9-1-1 excise tax was raised by \$.25 on all devices with access to 9-1-1 services, including contract cellular phone lines, pre-paid wireless devices and voice over internet protocol (VoIP) devices, resulting in a total tax of \$1.00 per month per device/line. In 2019, HB2449 ensured not only the 2020 increase to the 9-1-1 excise tax, but an additional \$.25 increase in January, 2021 as well. These increases will continue to provide relief to the budgets of our member agencies while allowing WCCCA to create a more financially sustainable long-term financial plan providing for the needs of our internal and external stakeholders and customers. The tax as it is defined in HB2449 will sunset on December 31, 2029.

The strength of our Agency resides in its committed partnership base of all participating jurisdictions. Member agencies include municipalities, fire districts, and the County, which are supported by property taxes and a number of other sources of revenue. The Agency annually updates its financial plan and five year forecast to project expenditures and to allow members to plan for the future needs of the Agency. Annual cost increases to our members continues to be in the Agency's focus and a driver in everything that we plan and execute in our commitment to excellence.

Fiscal Year 2020-2021 continued the evolution of the global COVID-19 experience, which closed businesses, resulted in many people without work and continues to have impacts upon supply chains and commerce. Given potential financial impacts to government entities reliant upon property taxes and other tax-based revenues, we will be watching closely for changes to governmental revenues on the horizon which could affect our Members, and consequently could also impact WCCCA.

Long-term Financial Planning

Unassigned fund balance in the General Fund at year end was \$7,258,578. The Agency has a policy to maintain an average quarter's operations expenditures from the previous fiscal year in order to ensure continued operations in times of crisis or emergency. For FY21, an average quarter's operating expenditure was about \$3.7 million.

On an annual basis, the Agency develops a long-range financial forecast which is part of the budgeting process and approved by the Board of Commissioners. The forecast includes only the General Fund which encompasses all of the operations of the Agency. The first year of the adopted forecast provides a plan for the Agency to use in developing the ensuing year's budget. This annual financial forecasting provides the Board and management with a long-term view of the financial health of the Agency, and offers strategic approaches to planning for service levels and predictability of the cost to the member governments that direct the Agency.

“WCCCA’s mission is to support the public safety of our community through:

- *Rapid dispatch of appropriate first responders aided with the best information available;*
- *Ongoing communications innovations and problem-solving partnerships with public safety providers, and*
- *Outstanding assistance to every citizen.”*

With introduction of a new Executive Director in March of 2021, discussions about strategic planning have occurred with the Executive Boards, who desire WCCCA to engage in a strategic planning process to set a clear course for WCCCA’s approach to its financial and business future. Staff has taken early steps to begin a vision of internal culture. Over the next year, with a new Executive Director in place and much of the work on our capital projects completing, the timing will be right to begin this process. The plan will include a business model that encompasses technological and operational changes ahead which could change how and what type of service is provided; capital needs; the operation of a successful organization with limited revenues; cost controls and the financial impacts to our members.

In 2022, we look forward to moving into a new facility at a new location, thanks to the \$77 million bond placed on the ballot on our behalf by Washington County and approved by the citizens of Washington County in 2016, which will provide stability in continuity of operation. Additional emphasis will be on long-term capital planning to address needs for the next 10 to 20 years, including life cycle plans, procurement and maintenance of the critical systems relied upon by our citizens and our member agencies and with an eye on the technological horizon. As we create this new plan, we continue to strive to achieve the following goals:

Real Time Public Safety Response Goals

- 1. Answer 9-1-1 calls quickly and effectively:** *Meet or exceed benchmarks for the speed of emergency call answering and the quality of assistance provided to the caller.*
- 2. Optimal timeliness in Fire & EMS dispatch:** *Meet or exceed benchmarks for providing triage, dispatching the right fire/EMS resource efficiently and following through with quality event and location information support. Saving lives is our business.*
- 3. Effective police dispatch:** *Meet or exceed benchmarks for effective police dispatch timeliness, resource management, and information quality. Provide reliable data for members records management systems.*
- 4. Safe, efficient radio management:** *Maintain a robust and current emergency communications system that provides airwaves for what matters most.*

Ongoing Public Safety Partner Support Goals

- 5. Partner with our member agencies in public safety problem solving, excellent service and efficiencies:** *Enhance police and fire responders' ability to perform their duties, protecting and preserving life, controlling disorder, providing for the needs of our citizens, calming and soothing their fears.*
- 6. Preparedness which connects all necessary responders during a major emergency:** *Ensure preparedness for catastrophic events within WCCCA, within our communities, working with local and regional response partners.*
- 7. Lead the community of users in a robust technology vision:** *Ensure core public-safety grade interoperability enhanced by emerging innovations in voice and data communications.*

Administrative & Structural Support Goals

- 8. Support our employees in a culture of excellence:** *Maintain full staffing in an environment respectful of diversity and supportive of employee needs, innovation, and skill development.*
- 9. Build on WCCCA's position as an agency providing consolidated cost efficiencies:** *Meet or exceed targets for financial management, efficiency*

partnerships, and user confidence in WCCCA as a value-added element to the public safety response and service efforts of our members.

Relevant Financial Policies

The Agency has adopted a comprehensive set of financial policies. Among these, is a policy that requires the adoption of a balanced annual operating budget (i.e., estimated revenues equal to or in excess of appropriations). In an effort to control user fee increases, the Agency estimates revenues to avoid building excess fund balance or depleting fund balance below policy thresholds. The Agency's financial policies also stress the importance of budget planning to maintain existing service levels. The Agency is constantly in pursuit of new revenue streams to diversify funding and relieve the burden of fees upon its stakeholders and members.

Major Initiatives

As anticipated, technology remains at the forefront of our initiatives now, and will continue to drive planning in the future.

In May 2016, the citizens of Washington County voted to approve general obligation bond funds in the amount of \$77,000,000 for the purposes of replacing and upgrading WCCCA's emergency communications systems, including seismic upgrades, where needed. In addition, the bond funds the design and the construction of a new 9-1-1 Dispatch Facility. An agreement between WCCCA and Washington County is in place that guides the project and ensures accountability for expenditures. The Emergency Communication System Upgrade project is at last winding down. Work on preparing new Subscriber Radios for full function has been completed with subscriber radios distributed to WCCCA's Users. Dispatch Center personnel training and equipment upgrades have been in our focus and has also been completed.

The new WCCCA 9-1-1 Dispatch Facility construction is nearly complete with weekly updates and photos of progress facilitated by our Project Manager. A monthly newsletter is published by Washington County to ensure stakeholders are kept apprised of the progression as well. It will be necessary to fully fit up and make ready the new 9-1-1 Dispatch Facility as well as operate it in parallel with the existing facility for a period of time to insure emergency and non-emergency calls and police, fire, and medical dispatch services are uninterrupted during the transition between the old and new buildings. The current timeline for moving into the new Facility is in early 2022.

With the move to the new facility and a new Executive Director in place, WCCCA is very much in a transitional phase. While these transitions can create discomfort and even risk, WCCCA staff is committed to ensuring that excellence in emergency communications continues and that those selected to fill these important roles will bring energy, experience, vision and a desire to achieve the highest level of service to WCCCA's stakeholders and citizens. It is anticipated that WCCCA will also reach its goal of staffing the 9-1-1 Center with the fully allocated compliment of 67 dispatch staff before the end of calendar 2021.

Other Information

Independent Audit

State of Oregon Revised Statutes, ORS 297.405 to 297.555, require an annual audit of the fiscal affairs of the Agency by independent public accountants selected by the Board of Commissioners. The Agency has complied with this requirement and the auditor's report has been included in this report.

Awards

The Government Finance Officers Association of the United States and Canada (GFOA) awarded a Certificate of Achievement for Excellence in Financial Reporting to Washington County Consolidated Communications Agency for its Annual Comprehensive Financial Report (ACFR) for the fiscal year ended June 30, 2020. This was the twenty-third year that the Agency has received this prestigious award. In order to be awarded a Certificate of Achievement, a government must publish an easily readable and efficiently organized ACFR. This report must satisfy both generally accepted accounting principles and applicable legal requirements.

A Certificate of Achievement is valid for a period of one year only. We believe that our current ACFR continues to meet the Certificate of Achievement Program's requirements and we are submitting it to the GFOA to determine its eligibility for another certificate.

Acknowledgments

As we see our major capital initiatives come closer to fruition, we are reminded of the generous support of the citizens of Washington County through their approval of the general obligation bond in May 2016. Because of their faith and trust in us, we have been able to work forward toward providing continued communications and excellent public safety service to our public and to our member agencies. As we evolve into digital radio communications and move to the new 9-1-1 Facility in 2022, we understand how fortunate we are to have the modern technology and seismic structure that we need to provide continuous care for our communities in Washington County.

Washington County has provided WCCCA with the financial opportunity to address our capital needs through their work with us on the bond, and they continue beside us, shoulder to shoulder, not only through the administration of the bond, but also in their presence, guidance, support and staff, to ensure that WCCCA accomplishes its capital projects goals which are so critical to our members and our public. We extend our sincere appreciation to Washington County for their partnership with us.

WCCCA's membership is quite unique in how its agencies and stakeholders come together with each other to strategize in the many business and operational functions shared through this Agency. The operational and communication needs of our public safety agencies are critical to their care of the public and WCCCA is able to provide the best service possible with their input and planning alongside us. It goes without saying that their financial support is of utmost importance to the continued operation of WCCCA, given that they fund approximately 67% of our operating budget. We recognize their contributions to the Agency's success in its mission and we are grateful for the relationship with them and the resulting success that we share because of it.

On a personal note, I would like to express my admiration and gratitude to the WCCCA staff. The team at WCCCA regularly work long hours, late nights and holidays in an effort to always be here and always be ready for the next emergency. The personal commitment and work ethic of each member of WCCCA has a direct impact on human life and safety. I'm incredibly proud to be a part of this team, which is often unsung and more often unrecognized. They are crucial to our way of life in Washington County and beyond.

Respectfully submitted,



Michael Stout

Chief Financial Officer



Government Finance Officers Association

Certificate of
Achievement
for Excellence
in Financial
Reporting

Presented to

**Washington County
Consolidated Communications Agency
Oregon**

For its Comprehensive Annual
Financial Report
For the Fiscal Year Ended

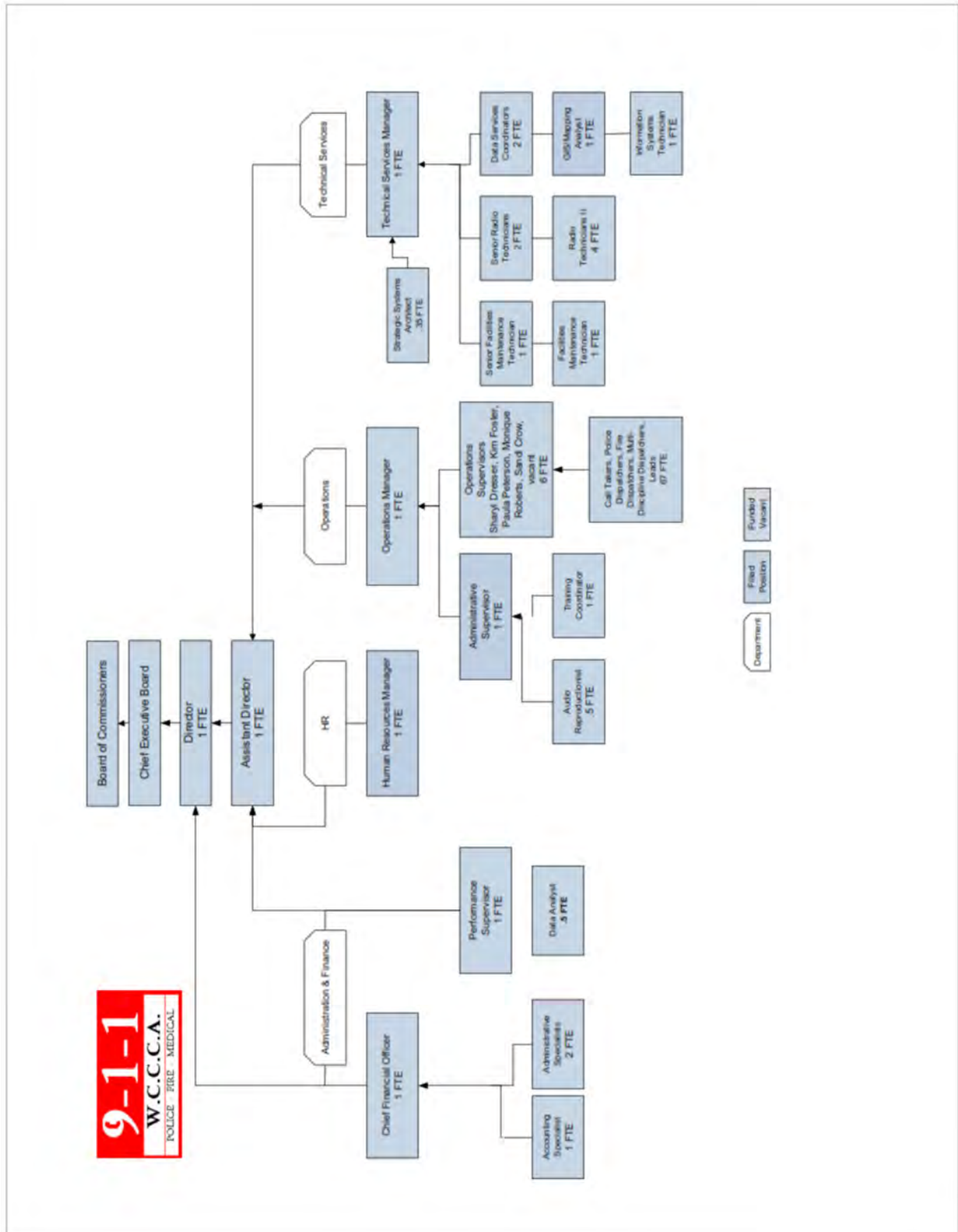
June 30, 2020

Christopher P. Morrill

Executive Director/CEO

Washington County Consolidated Communications Agency

Governing Bodies
June 30, 2021



Board of Commissioners

Participating Agency

Board Representatives

City of Beaverton	Lacey Beaty, Mayor
City of Corneilius	Rob Drake, City Manager
Washington County	Sia Lindstrom, Asst. County Admin.
Tualatin Valley Fire & Rescue	Bob Wyffels, Board of Directors
City of Hillsboro	David Downey, Fire Chief
City of Tualatin	Maria Reyes, Councilor
City of Tigard	Kathy McAlpine, Police Chief
City of Sherwood	Ty Hanlon, Captain
City of Forest Grove	Pete Truax, Mayor
City of Gaston	Jerry Spaulding, Mayor
City of King City	Shawna Thompson, Councilor
City of North Plains	Robert Kindle, Jr., Councilor
City of Durham	Chuck Van Meter, Councilor
City of Banks	Mark Gregg, Councilor
Banks Fire Protection Dist. #13	Rodney Linz, Fire Chief
Cornelius Rural Fire District	Vacant
Gaston Rural Fire District	Vacant

Citizen Representatives

Appointed by	Representative	Term Expires
Tualatin Valley Fire & Rescue	TBD	
City of Forest Grove	TBD	
City of Sherwood	Keith Mays	12/2021
City of Beaverton	Abigail Elder	12/2024
City of Beaverton	Nadia Hasan	12/2021
City of North Plains	Michele McCall Wallace	12/2021
Banks Fire District	Tonya Witham	12/2021
City of Cornelius	Ralph Brown	12/2021

Chief Executive Officers Board

Participating Agency

Representative

City of Cornelius

Chair Rob Drake, City Manager

City of Tigard

Kathy McAlpine, Police Chief

Washington County

Erin Calvert, Deputy County Admin.

Tualatin Valley Fire & Rescue

Deric Weiss, Fire Chief

WCCCA Executive Management

Mark Bucholz

Executive Director

Jennifer Reese

Assistant Director

Michael Stout

Chief Financial Officer, Budget Officer

Kim Foster

Operations Manager

Ron Polluconi

Technical Services Manager

Jennifer Kilcoin

Human Resources Manager

This page is intentionally left blank

Financial Section

This page is intentionally left blank.

INDEPENDENT AUDITOR'S REPORT

Board of Commissioners
Washington County Consolidated Communications Agency
Beaverton, Oregon

REPORT ON THE FINANCIAL STATEMENTS

We have audited the accompanying financial statements of the governmental activities and each major fund of Washington County Consolidated Communications Agency (the Agency), as of and for the year ended June 30, 2021, and the related notes to the financial statements, which collectively comprise the Agency's basic financial statements as listed in the Table of Contents.

MANAGEMENT'S RESPONSIBILITY FOR THE FINANCIAL STATEMENTS

Management is responsible for the preparation and fair presentation of these financial statements in accordance with accounting principles generally accepted in the United States of America; this includes the design, implementation, and maintenance of internal control relevant to the preparation and fair presentation of financial statements that are free from material misstatement, whether due to fraud or error.

AUDITOR'S RESPONSIBILITY

Our responsibility is to express opinions on these financial statements based on our audit. We conducted our audit in accordance with auditing standards generally accepted in the United States of America. Those standards require that we plan and perform the audit to obtain reasonable assurance about whether the financial statements are free from material misstatement.

An audit involves performing procedures to obtain audit evidence about the amounts and disclosures in the financial statements. The procedures selected depend on the auditor's judgment, including the assessment of the risks of material misstatement of the financial statements, whether due to fraud or error. In making those risk assessments, the auditor considers internal control relevant to the entity's preparation and fair presentation of the financial statements in order to design audit procedures that are appropriate in the circumstances, but not for the purpose of expressing an opinion on the effectiveness of the entity's internal control. Accordingly, we express no such opinion. An audit also includes evaluating the appropriateness of accounting policies used and the reasonableness of significant accounting estimates made by management, as well as evaluating the overall presentation of the financial statements.

We believe that the audit evidence we have obtained is sufficient and appropriate to provide a basis for our audit opinions.

OPINIONS

In our opinion, the financial statements referred to above present fairly, in all material respects, the respective financial position of the governmental activities and each major fund of the Agency as of June 30, 2021, and the respective changes in financial position and the respective budgetary comparison for the General Fund for the year then ended in accordance with accounting principles generally accepted in the United States of America.

OTHER MATTERS

Required Supplementary Information

Accounting principles generally accepted in the United States of America require that Required Supplementary Information, such as Management's Discussion and Analysis, and the pension and other postemployment benefit schedules and notes in the Required Supplementary Information, as listed in the Table of Contents, be presented to supplement the basic financial statements. Such information, although not a part of the basic financial statements, is required by the Governmental Accounting Standards Board who considers it to be an essential part of financial reporting for placing the basic financial statements in an appropriate operational, economic, or historical context. We have applied certain limited procedures to the Required Supplementary Information in accordance with auditing standards generally accepted in the United States of America, which consisted of inquiries of management about the methods of preparing the information and comparing the information for consistency with management's responses to our inquiries, the basic financial statements, and other knowledge we obtained during our audit of the basic financial statements. We do not express an opinion or provide any assurance on the information because the limited procedures do not provide us with sufficient evidence to express an opinion or provide any assurance.

Other Information

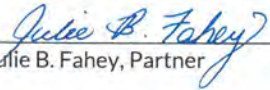
Our audit was conducted for the purpose of forming opinions on the financial statements that collectively comprise the Agency's basic financial statements. The Other Supplementary Information, as listed in the Table of Contents, is presented for purposes of additional analysis and is not a required part of the basic financial statements. The Other Supplementary Information is the responsibility of management and was derived from and relates directly to the underlying accounting and other records used to prepare the basic financial statements. Such information has been subjected to the auditing procedures applied in the audit of the basic financial statements and certain additional procedures, including comparing and reconciling such information directly to the underlying accounting and other records used to prepare the basic financial statements or to the basic financial statements themselves, and other additional procedures in accordance with auditing standards generally accepted in the United States of America. In our opinion, the Other Supplementary Information is fairly stated, in all material respects, in relation to the basic financial statements as a whole.

The Introductory and Statistical sections, as listed in the Table of Contents, have not been subjected to the auditing procedures applied in the audit of the basic financial statements, and accordingly, we do not express an opinion or provide any assurance on them.

OTHER REPORTING REQUIRED BY OREGON MINIMUM STANDARDS

In accordance with *Minimum Standards for Audits of Oregon Municipal Corporations*, we have also issued our report dated December 22, 2021 on our consideration of the Agency's compliance with certain provisions of laws and regulations, including provisions of Oregon Revised Statutes as specified in Oregon Administrative Rules. The purpose of that report is to describe the scope of our testing of compliance and the results of that testing, and not to provide an opinion on compliance.

TALBOT, KORVOLA & WARWICK, LLP

By _____
Julie B. Fahey, Partner

Portland, Oregon
December 22, 2021

This page is intentionally left blank.

Management's Discussion and Analysis

This page is intentionally left blank.

Washington County Consolidated Communications Agency

Management's Discussion and Analysis Year Ended June 30, 2021

As management of Washington County Consolidated Communications Agency (WCCCA or the Agency), we offer readers of the Agency's financial statements this narrative overview and analysis of the financial activities of the Agency for the fiscal year ended June 30, 2021. Please read it in conjunction with the accompanying Basic Financial statements and the Notes to the Basic Financial Statements.

Financial Highlights

- The assets and deferred outflows of resources of the Agency exceeded its liabilities and deferred inflows of resources at the close of the most recent fiscal year by \$27,262,038.
- The Agency's total net position increased by \$2,817,174, net of a restatement to implement GASB 83, Certain Asset Retirement Obligations,
- At the close of the fiscal year, the Agency reported a combined fund balance of \$8,770,526, an increase of \$338,555 in comparison with the prior year. Approximately 82.8% (\$7,258,577) is available for spending at the Agency's discretion (unassigned fund balance).
- At the end of the fiscal year, the General Fund unassigned fund balance was \$7,258,577 or approximately 45% of total General Fund expenditures.

Overview of the Financial Statements

The discussion and analysis provided are intended to serve as an introduction to the Agency's basic financial statements. The Agency's basic financial statements consist of three components: 1) Government-wide Financial Statements, 2) Fund Financial Statements, and 3) the Notes to the Basic Financial Statements. This report also includes supplementary information intended to furnish additional detail to support the basic financial statements themselves.

Government-wide Financial Statements. The government-wide financial statements provide readers with a broad overview of the Agency's finances, in a manner similar to a private-sector business.

The *Statement of Net Position* presents financial information on all the Agency's assets, deferred outflows of resources, liabilities, and deferred inflows of resources, with the difference reported as net position. Over time, increases or decreases in net position may serve as an indicator of whether the financial position of the Agency is improving or deteriorating.

The *Statement of Activities* presents information showing how the Agency's net position changed during the most recent fiscal year. All changes in net position are reported as soon as the underlying event giving rise to the change occurs, regardless of the timing of related cash flows. Thus, revenues and expenses are reported for some items that will only result in cash flows in future fiscal periods (e.g., uncollected 9-1-1 telephone excise taxes and earned but unused vacation leave).

In the government-wide financial statements, the Agency's activities are shown in one category: *Governmental Activities*. The governmental activities of the Agency include emergency communications and dispatch operations and are primarily supported through charges for services to other governments and 9-1-1 telephone excise taxes. The Agency has no business-type activities.

The government-wide financial statements can be found on pages 34 and 35 of this report.

Fund Financial Statements. A fund is a grouping of related accounts that is used to maintain control over resources that have been segregated for specific activities or objectives. The Agency, like other state and local governments, uses fund accounting to ensure and demonstrate compliance with finance-related legal

Washington County Consolidated Communications Agency

Management's Discussion and Analysis (Continued) For the Year Ended June 30, 2021

requirements. All of the funds of the Agency are governmental funds. The Agency has no proprietary funds or fiduciary funds.

Governmental Funds. Governmental funds are used to account for essentially the same functions reported as governmental activities in the government-wide financial statements. However, unlike the government-wide financial statements, governmental fund financial statements focus on near-term inflows and outflows of spendable resources, as well as on balances of spendable resources available at the end of the fiscal year. Such information may be useful in assessing the Agency's near-term financing requirements.

Because the focus of governmental funds is narrower than that of the government-wide financial statements, it is useful to compare the information presented for governmental funds with similar information presented for governmental activities in the government-wide financial statements. By doing so, readers may better understand the long-term impact of the Agency's near-term financing decisions. Both the governmental fund balance sheet and governmental fund statement of revenues, expenditures, other financing sources (uses), and changes in fund balances provide a reconciliation to facilitate this comparison between governmental funds and governmental activities.

The Agency maintains two individual governmental funds. Information is presented separately in the governmental fund balance sheet and in the governmental fund statement of revenues, expenditures, other financing sources (uses), and changes in fund balances for the General Fund and the Capital Projects Fund, both of which are considered to be major funds.

The Agency adopts annual appropriated budgets for both funds. Budgetary information has been provided for each fund of the Agency to demonstrate compliance with these budgets.

The basic governmental fund financial statements can be found on pages 36 and 38 of this report.

Notes to the Basic Financial Statements. The notes provide additional information that is necessary to acquire a full understanding of the data provided in the government-wide and fund financial statements. The notes to the basic financial statements can be found on pages 41-66 of this report.

Required Supplementary Information. The required supplementary information provides additional information of the Agency's net pension (asset)/liability, contributions to Oregon Public Employees Retirement System (PERS) and changes in total Postemployment Benefits Other Than Pensions (OPEB) liability and can be found beginning on page 70.

Other Supplementary Information. The other supplementary information provides additional information of the Agency's Capital Projects Fund budget to actual schedule on page 82.

Other Information. The Statistical Section of this report offers information regarding the Agency's economic condition and can be found beginning on page 86.

Government-wide Financial Analysis

As noted earlier, net position over time may serve as a useful indicator of a government's financial assets. In the case of the Agency, assets and deferred outflows exceeded liabilities and deferred inflows by \$27,262,038 as of the end of the most recent fiscal year.

Washington County Consolidated Communications Agency

Management's Discussion and Analysis (Continued) For the Year Ended June 30, 2021

	Governmental Activities		Increase (Decrease) from 2020
	June 30, 2021	2020 as restated	
Assets			
Current and other assets	\$ 14,188,911	\$ 14,696,080	\$ (507,169)
Capital assets	32,124,699	25,149,526	6,975,173
Total assets	<u>46,313,610</u>	<u>39,845,606</u>	<u>6,468,004</u>
Deferred outflows of resources	<u>6,041,464</u>	<u>5,036,057</u>	<u>1,005,407</u>
Liabilities			
Current liabilities	4,067,423	4,740,984	(673,561)
Noncurrent liabilities	20,350,167	16,042,290	4,307,877
Total Liabilities	<u>24,417,590</u>	<u>20,783,274</u>	<u>3,634,316</u>
Deferred inflows of resources	<u>675,446</u>	<u>1,129,174</u>	<u>(453,728)</u>
Net position			
Investment in capital assets	32,124,699	25,149,526	6,975,173
Restricted	1,190,632	868,098	322,534
Unrestricted	(6,053,293)	(3,048,409)	(3,004,884)
Total net position	<u>\$ 27,262,038</u>	<u>\$ 22,969,215</u>	<u>\$ 4,292,823</u>

The largest portion of the Agency's net position reflects its investment in capital assets (e.g. communications towers and equipment, leasehold improvements, and furniture, fixtures and computer equipment). Investment in capital assets increased by approximately \$7 million due to the increases to work in progress on infrastructure of \$7.4 million, offset by routine depreciation expense. The Agency uses these capital assets to provide services to citizens; consequently, these assets are not available for future spending. Investment in capital assets is to be reported net of related debt. The Agency, however, has no debt.

Unrestricted net position is a negative \$6.0 million, a \$4.3 million change from fiscal year 2020. Negative unrestricted net position is a result of expenses exceeding revenues during a time when the Agency was not fully recognizing pension expense.

Current and other assets consist mainly of cash and investments, and 9-1-1 taxes and accounts receivable, which are used to meet the Agency's ongoing obligations to its participating governments. Taxes receivable increased \$415,000 due to an increase in the tax rate.

Deferred outflows of resources consist of amounts recorded for pension, OPEB and asset retirement obligations.

Liabilities of the Agency consist of accounts payable, accrued salaries and benefits payable, transition liability, net pension liability, total other postemployment benefits liability, unearned revenue and asset retirement obligations. The Agency's unearned revenue accounts for 12% of total liabilities and is the amount of the Agency's first quarter billing to participating governments for the ensuing fiscal year. The net

Washington County Consolidated Communications Agency

Management's Discussion and Analysis (Continued) For the Year Ended June 30, 2021

pension liability is 67% of the total liabilities in the amount of \$16,384,820 an increase of \$3.5 million due to decreased funding status of the plan as a whole.

Deferred inflows of resources consist of amounts recorded for pension and OPEB.

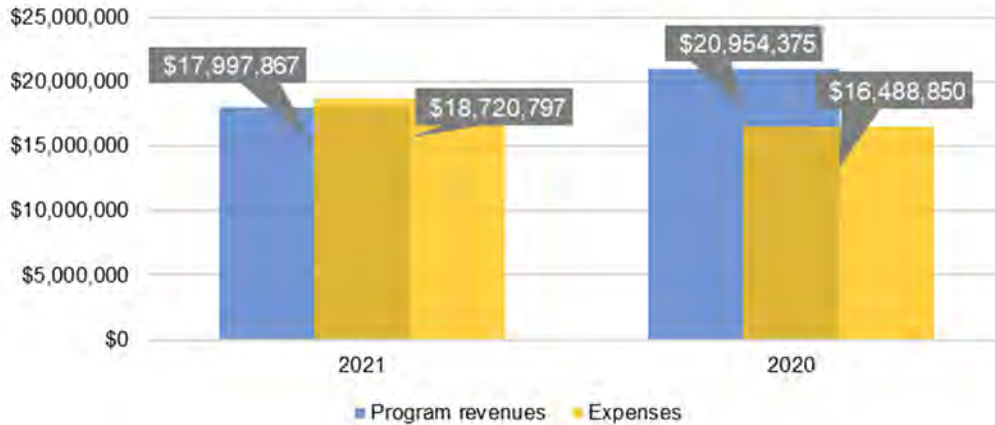
Governmental Activities. Governmental program activities, which represent all the Agency's activities, increased net position by \$4,292,823. However, the implementation of GASB 83, Asset Retirement Obligations, resulted in a decrease of \$1,475,649 to the beginning net position of fiscal 2020. Key elements of the increase in net position for the Agency are as follows:

	Governmental Activities For the Year Ended June 30,		Increase (Decrease) from 2020
	2021	2020	
Revenues			
Program revenues			
Charges for services	\$ 11,304,532	\$ 11,825,201	\$ (520,669)
Capital grants and contributions	6,693,335	9,129,174	(2,435,839)
General revenues			
9-1-1 taxes	4,721,269	3,691,750	1,029,519
Earnings on investments	63,602	161,375	(97,773)
Miscellaneous	230,882	244,553	(13,671)
Total revenues	23,013,620	25,052,053	(2,038,433)
Expenses			
Public safety	18,720,797	16,488,850	2,231,947
Excess of revenues over expenditures before contributions	4,292,823	8,563,203	(4,270,380)
Contribution of capital assets	-	(22,036,100)	22,036,100
Increase (decrease) in net position	4,292,823	(13,472,897)	17,765,720
Net position, beginning, as previously reported	22,969,215	37,917,761	(14,948,546)
Implementation of GASB 83 (note IV. E.)	-	(1,475,649)	1,475,649
Net position, beginning, as restated	22,969,215	36,442,112	(13,472,897)
Net position, ending	\$ 27,262,038	\$ 22,969,215	\$ 4,292,823

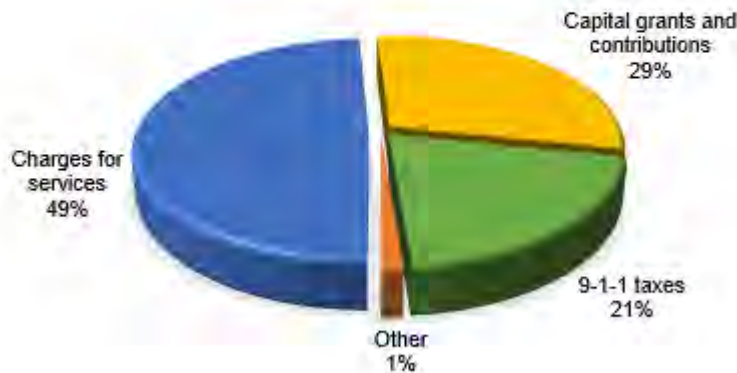
Washington County Consolidated Communications Agency

Management's Discussion and Analysis (Continued) For the Year Ended June 30, 2021

**Governmental Activities
Program Revenues and Expenses**
For the Years Ended June 30, 2021 & 2020



**Governmental Activities
Revenue by Source**
For the Years Ended June 30, 2021



Capital grants consist of bond proceeds from the County as needed for capital projects; these decreased \$2.4 million as capital spending decreased compared to the prior year. Charges for services decreased by approximately \$520,000 due to decreased rates charged to member agencies as a result of anticipated excess fund balance. Tax revenue increased approximately \$1 million due to an increase in the excise tax. Public safety expense increased \$2.2 million compared to the prior year, due to increased pension expense as the PERS liability increased.

Washington County Consolidated Communications Agency

Management's Discussion and Analysis (Continued) For the Year Ended June 30, 2021

Financial Analysis of the Agency's Funds

As noted earlier, the Agency uses fund accounting to ensure and demonstrate compliance with finance-related legal requirements.

Governmental Funds. The focus of the Agency's governmental funds is to provide information on near-term inflows, outflows, and balances of spendable resources. Such information is useful in assessing the Agency's financing requirements. Unassigned fund balance in particular may serve as a useful measure of the Agency's net resources available for spending at the end of the fiscal year.

At June 30, 2021, the Agency's governmental funds reported ending fund balance by category of:

Fund balances:	
Non-spendable	\$ 397,279
Restricted	1,114,670
Unassigned	<u>7,258,577</u>
Total fund balance	<u>\$ 8,770,526</u>

At June 30, 2021, the Agency's governmental funds reported combined ending fund balances of \$8,770,526, an increase of \$338,555 in comparison with the prior year, primarily due to savings from vacant positions.

General Fund. The General Fund is the operating fund of the Agency. At the end of the current fiscal year, 95% of the General Fund balance was unassigned. As a measure of the General Fund's liquidity, it may be useful to compare the total fund balance to total fund expenditures. Total, unassigned fund balance represents 45% of total General Fund expenditures. During the current fiscal year, the fund balance of the Agency's General Fund remained fairly stable to the prior year.

Capital Projects Fund. The fund balance increased by \$374,580 primarily due to timing differences between intergovernmental revenues and capital outlay expenditures for the Emergency Communication System Project.

General Fund Budgetary Highlights

Actual results of operations of the General Fund varied in comparison to budget for reasons as follows:

- Total revenues exceeded budget by \$157,000 primarily due to tax revenue and charges for services coming in greater than expected; however, this was offset by miscellaneous revenue coming in significantly under budget. This was the result of expenses shared with partnering agencies being accounted for differently than budgeted.
- Personnel services actual expenditures were \$588,000 less than budget because the Agency continues to experience significant vacancy savings in budgeted positions.
- Materials and services actual expenditures were \$1.7 million less than budget due primarily to timing of technology and hardware purchases which relate to the planned relocation of the Agency to a new facility.
- Capital outlay appropriations were under spent by \$960,000 due to timing of expenditures for the relocation project.

Washington County Consolidated Communications Agency

Management's Discussion and Analysis (Continued) For the Year Ended June 30, 2021

Capital Assets

The Agency's investment in capital assets includes leasehold improvements, vehicles, furniture, fixtures, equipment, and work in progress. As of June 30, 2021, the Agency had invested \$32,124,699 in capital assets, net of accumulated depreciation, as shown in the following table:

Capital assets, net of accumulated depreciation	Governmental Activities		Increase (Decrease) from 2020
	June 30,		
	2021	2020	
Leasehold improvements	\$ 553,881	\$ 731,362	\$ (177,481)
Vehicles	140,655	114,320	26,335
Furniture, fixtures, and equipment	737,173	1,040,855	(303,682)
Work in progress	30,692,990	23,262,989	7,430,001
Total capital assets, net of accumulated depreciation	<u>\$ 32,124,699</u>	<u>\$ 25,149,526</u>	<u>\$ 6,975,173</u>

Investment in capital assets increased by approximately \$7 million due to the increases to work in progress on infrastructure of \$7.4 million, offset by routine depreciation expense. The Agency uses these capital assets to provide services to citizens.

Additional information on the Agency's capital assets can be found in Footnote III. B on page 48 of this report.

Economic Factors; Next Year's Budget and Participating Governments Rates

As always, the economic environment of the nation, the State of Oregon, and the local economy influence and inform the Agency's financial health. Washington County Consolidated Communications Agency (WCCCA, Agency) is on the brink of some exciting and profound changes which will take place within the Fiscal Year 2021-22 budget. Despite the rapid evolution of the Agency, WCCCA is committed to providing timely, efficient and compassionate communication services to all citizens through innovation, employee excellence and partnerships with public safety providers.

Call-Taking and Dispatching are at the heart of WCCCA. Nearly 80% of ongoing, General Fund expenditures are salary and wage expenses and roughly two-thirds of those expenses originate in our Operations Department. Filling vacant positions, compensating our employees appropriately and getting new hires up the long training curve are key considerations in budgeting this large chunk of WCCCA's budget. The FY22 budget anticipates a labor settlement and the Operations Department will be staffed with an additional supervisor to assist with hiring bottlenecks and training challenges.

For FY22, the aggregate annual membership rate increased about 3.1% from the previous year's budgeted membership fees. The four-year average of aggregate member increases is less than 1.7%. The Agency is conscientious about the increase in member fees and strives to minimize the impact of fee increases on members. Because the Agency has a relatively small membership base, the gap between 9-1-1 tax funding and operational expenses exponentially effects the membership fees. The Agency partners strategize with us to determine fiscal directions and plans to maintain the Agency's services to the public and our members, keeping in mind the potential for funding fluctuations that may impact service levels. The Agency strives to maintain service levels for our crucial services. No changes in service levels are anticipated in FY22.

Washington County Consolidated Communications Agency

Management's Discussion and Analysis (Continued) For the Year Ended June 30, 2021

Traditionally 9-1-1 tax revenue received by the Agency has remained consistent, with a slight increase each year over the previous year. This revenue is generated from landline, wireless and pre-paid devices which can access the 9-1-1 system. As a result of a legislative increase in the excise tax assessment for FY21 and FY22, the Agency has increased the budgeted revenue for 9-1-1 taxes in FY22 by \$1.6 million.

An annual financial planning process is conducted before the Board at their direction. While the plan requires consideration of the financial stresses of the partners, it also addresses the upward pressures on program expenses of the Agency.

As the state of Oregon works toward funding and building Next Generation 9-1-1 infrastructure to which we will connect, we are looking forward to the changes that will be upon us in the Next Generation 9-1-1 Center. It's likely that in the next few years 9- 1-1 dispatching will look different than it does today. Data will become a focal element of the 9-1-1 function. Those changes could bring about a work force that is comprised of new skill sets, necessitating reorganization, strategizing in new ways and opening new avenues of partnership with our public safety neighbors. Through networking locally, at the state level and nationally as well, we strive to educate ourselves and prepare for the capabilities that will be made possible to us in voice and data transmissions. Information transfer and dissemination is going to become a "larger than ever" portion of the services provided at WCCCA.

Requests for Information

This financial report is designed to provide a general overview of Washington County Consolidated Communications Agency's finances for all those with an interest in the Agency's finances. Questions concerning any of the information provided in this report or requests for additional financial information should be addressed to Administration, Washington County Consolidated Communications Agency at 17911 NW Evergreen Place, Beaverton, Oregon, 97006.

Basic Financial Statements

This page is intentionally left blank.

Washington County Consolidated Communications Agency

Statement of Net Position June 30, 2021

	Governmental Activities
ASSETS	
Cash and investments	\$ 8,057,180
Receivables:	
9-1-1 taxes	2,588,148
Accounts	3,070,342
Prepays	397,279
Capital assets not being depreciated:	
Work in progress	30,692,990
Capital assets, net of accumulated depreciation:	
Leasehold improvements	553,881
Vehicles	140,655
Furniture, fixtures, and equipment	737,173
Net OPEB asset	75,962
	46,313,610
DEFERRED OUTFLOWS OF RESOURCES	
Deferred amounts related to asset retirement obligations	594,471
Deferred amounts related to pension	5,327,504
Deferred amounts related to OPEB	119,489
	6,041,464
LIABILITIES	
Accounts payable	607,360
Accrued salaries and benefits payable	526,672
Unearned revenue	2,933,391
Noncurrent liabilities	
Due within one year	459,717
Due in more than one year	1,245,958
Asset retirement obligation	2,259,672
Net pension liability	16,384,820
	24,417,590
DEFERRED INFLOWS OF RESOURCES	
Deferred amounts related to pension	603,323
Deferred amounts related to OPEB	72,123
	675,446
NET POSITION	
Investment in capital assets	32,124,699
Restricted for capital acquisitions	1,114,670
Restricted for OPEB	75,962
Unrestricted	(6,053,293)
	\$ 27,262,038

The notes to the basic financial statements are an integral part of this statement.

Washington County Consolidated Communications Agency

Statement of Activities For the Year Ended June 30, 2021

	Governmental Activities
EXPENSES	
Public safety - dispatch service	\$ 18,720,797
PROGRAM REVENUES	
Public Safety	
Charges for services	11,304,532
Capital grants and contributions	6,693,335
Total program revenues	17,997,867
Net program revenues	(722,930)
GENERAL REVENUES AND CONTRIBUTIONS	
9-1-1 taxes	4,721,269
Investment earnings	63,602
Miscellaneous	230,882
Total general revenues and contributions	5,015,753
Change in net position	4,292,823
NET POSITION, June 30, 2020, as previously reported	24,444,864
Implementation of GASB 83 (Note IV. E.)	(1,475,649)
NET POSITION, June 30, 2020, as restated	22,969,215
NET POSITION, June 30, 2021	\$ 27,262,038

The notes to the basic financial statements are an integral part of this statement.

Washington County Consolidated Communications Agency

Governmental Funds Balance Sheet June 30, 2021

	<u>General Fund</u>	<u>Capital Projects Fund</u>	<u>Total Governmental Funds</u>
ASSETS			
Cash and investments	\$ 6,715,145	\$ 1,342,035	\$ 8,057,180
Receivables:			
9-1-1 taxes receivable	2,588,148	-	2,588,148
Accounts receivable	3,005,087	65,255	3,070,342
Prepays	397,279	-	397,279
Total assets	<u>\$ 12,705,659</u>	<u>\$ 1,407,290</u>	<u>\$ 14,112,949</u>
LIABILITIES			
Accounts payable	\$ 314,740	\$ 292,620	\$ 607,360
Accrued salaries and benefits payable	526,672	-	526,672
Unearned revenue	2,933,391	-	2,933,391
Total liabilities	<u>3,774,803</u>	<u>292,620</u>	<u>4,067,423</u>
DEFERRED INFLOWS OF RESOURCES			
Unavailable revenue	<u>1,275,000</u>	<u>-</u>	<u>1,275,000</u>
FUND BALANCES			
Non-spendable	397,279	-	397,279
Restricted for capital acquisitions	-	1,114,670	1,114,670
Unassigned	7,258,577	-	7,258,577
Total fund balances	<u>7,655,856</u>	<u>1,114,670</u>	<u>8,770,526</u>
Total liabilities, deferred inflows of resources and fund balances	<u>\$ 12,705,659</u>	<u>\$ 1,407,290</u>	<u>\$ 14,112,949</u>

The notes to the basic financial statements are an integral part of this statement.

Washington County Consolidated Communications Agency

Reconciliation of the Balance Sheet of Governmental Funds to the Statement of Net Position June 30, 2021

Total fund balances	\$ 8,770,526
Capital assets are not financial resources and, therefore, are not reported in the governmental funds.	32,124,699
A portion of the Agency's 9-1-1 taxes are a receivable at year end but are not available soon enough to pay for current period expenditures and, therefore, are not reported as revenue in the governmental funds.	1,275,000
Net OPEB asset (\$75,962), deferred outflows (\$39,198) and deferred inflows (\$11,871) related to PERS OPEB are not reported in the governmental funds.	103,289
Compensated absences not payable in the current year are not recorded as governmental fund liabilities.	(846,140)
The transition liability amounts not payable in the current year are not recorded as governmental fund liabilities.	(318,743)
The net pension liability and deferred amounts related to pension do not provide (use) current resources and, therefore, are not reported in the governmental funds.	(11,660,639)
The total OPEB liability (\$540,792) and deferred amounts related to OPEB (deferred inflows of resources \$60,252 and deferred outflows of resources \$80,291) do not provide (use) current resources and, therefore, are not reported in the governmental funds.	(520,753)
The total Asset Retirement Obligation (ARO) liability and deferred amounts related to ARO do not provide (use) current resources and, therefore, are not reported in the governmental funds.	(1,665,201)
Total net position	<u><u>\$ 27,262,038</u></u>

The notes to the basic financial statements are an integral part of this statement.

Washington County Consolidated Communications Agency

Governmental Funds
Statement of Revenues, Expenditures,
Other Financing Sources (Uses), and Changes in Fund Balances
For Year Ended June 30, 2021

	<u>General Fund</u>	<u>Capital Projects Fund</u>	<u>Total Governmental Funds</u>
REVENUES			
Taxes	\$ 4,546,269	\$ -	\$ 4,546,269
Investment earnings	57,722	5,880	63,602
Charges for services	11,304,532	-	11,304,532
Intergovernmental	-	6,693,335	6,693,335
Miscellaneous	230,882	-	230,882
Total revenues	<u>16,139,405</u>	<u>6,699,215</u>	<u>22,838,620</u>
EXPENDITURES			
Current - Public Safety			
Personnel services	12,927,881	-	12,927,881
Materials and services	2,074,846	-	2,074,846
Capital outlay	1,172,703	6,324,635	7,497,338
Total expenditures	<u>16,175,430</u>	<u>6,324,635</u>	<u>22,500,065</u>
Excess of revenues over expenditures	<u>(36,025)</u>	<u>374,580</u>	<u>338,555</u>
Fund balances, June 30, 2020	<u>7,691,881</u>	<u>740,090</u>	<u>8,431,971</u>
Fund balances, June 30, 2021	<u>\$ 7,655,856</u>	<u>\$ 1,114,670</u>	<u>\$ 8,770,526</u>

The notes to the basic financial statements are an integral part of this statement.

Washington County Consolidated Communications Agency

Reconciliation of the Statement of Revenues, Expenditures, and Changes in Fund Balances to the Statement of Activities For Year Ended June 30, 2021

Net change in fund balances	\$	338,555
<p>Governmental funds report capital additions as expenditures. However, in the Statement of Activities, the cost of these assets is allocated over their estimated useful lives and reported as depreciation expense. This is the amount by which outlays for capital acquisitions, net, (\$7,497,338) exceeded depreciation expense (\$522,165).</p>		
		6,975,173
<p>Governmental funds report inventory purchases as expenditures. However, in the Statement of Activities, the cost of inventory is expensed as it is used. This is the amount of inventory purchases that were capitalized and therefore not reported as expense on the Statement of Activities.</p>		
		(1,042,880)
<p>Miscellaneous expense adjustments are reported in the Statement of Activities, but do not provide current financial resources and are not reported in the governmental funds.</p>		
		(2,306)
<p>9-1-1 taxes that do not meet the measurable and available criteria are not recognized as revenue in the current year in the governmental funds. In the Statement of Activities, these are recognized as revenue when assessed.</p>		
		175,000
<p>Compensated absences are recognized as an expenditure in the governmental funds when they are paid. In the Statement of Activities, compensated absences are recognized as an expense when incurred.</p>		
		(98,377)
<p>Transition liability expenditures are recognized in the governmental funds when they are paid. In the Statement of Activities, expense is recognized as the transition liability is amortized.</p>		
		35,410
<p>Pension and OPEB expenditures are recognized in the governmental funds when they are paid. In the Statement of Activities, they are recognized as an expense when incurred.</p>		
		(1,898,200)
<p>Asset Retirement Obligations (ARO) expense adjustments are reported in the Statement of Activities, but do not represent the use of current financial resources and are therefore not reported in the governmental funds.</p>		
		(189,552)
Change in net position	\$	4,292,823

The notes to the basic financial statements are an integral part of this statement.

Washington County Consolidated Communications Agency

General Fund Statement of Revenues, Expenditures and Changes in Fund Balances – Budget and Actual For Year Ended June 30, 2021

	Budgeted Amounts		Actual	Variance with Final Budget
	Original	Final		
REVENUES				
Taxes	\$ 3,600,000	\$ 3,600,000	\$ 4,546,269	\$ 946,269
Investment earnings	-	-	57,722	57,722
Charges for services	10,384,550	10,384,550	11,304,532	919,982
Miscellaneous	1,997,846	1,997,846	230,882	(1,766,964)
Total revenues	15,982,396	15,982,396	16,139,405	157,009
EXPENDITURES				
Personnel services	14,516,046	13,516,046	12,927,881	588,165
Materials and services	4,360,532	3,760,532	2,074,846	1,685,686
Capital outlay	533,000	2,133,000	1,172,703	960,297
Operating contingency	2,329,149	2,329,149	-	2,329,149
Total expenditures	21,738,727	21,738,727	16,175,430	5,563,297
Changes in fund balance	(5,756,331)	(5,756,331)	(36,025)	5,720,306
Fund balance, June 30, 2020	7,691,881	7,691,881	7,691,881	-
Fund balance, June 30, 2021	\$ 1,935,550	\$ 1,935,550	\$ 7,655,856	\$ 5,720,306

The notes to the basic financial statements are an integral part of this statement.

Washington County Consolidated Communications Agency

Notes to the Basic Financial Statements (Continued)

For Year Ended June 30, 2021

I. Summary of significant accounting policies

A. Reporting Entity

Washington County Consolidated Communications Agency (Agency) was formed in 1985, under the authority of Oregon Revised Statutes (ORS) Chapter 190 by the execution of an intergovernmental agreement between Washington County, the cities of Beaverton, Hillsboro, Cornelius, and North Plains, and Tualatin Valley Fire and Rescue. The Agency subsequently entered into intergovernmental agreements with the cities of Durham, King City, Sherwood, Tigard, Gaston, Tualatin, Forest Grove, and Banks; and the Fire Districts of Cornelius Rural Fire, Gaston Rural Fire, and Banks Fire Protection District #13.

The Agency is a municipal corporation that is recognized by the participating governments as the “9-1-1 Jurisdiction” defined in ORS 403.100 to 403.250 for purposes of operating as the public safety answering point of the emergency 9-1-1 telephone system. The agreement obligates the participating governments to contribute emergency 9-1-1 telephone system excise tax revenues received by the State of Oregon to the Agency. The Agency provides consolidated public safety communications for the participating governments and for other governments under contract.

The agreement also obligates the participating governments to fund any capital and operating expenses/expenditures in excess of emergency telephone system excise tax proceeds, contract revenues, and other revenues. The Agency may be terminated by mutual agreement of the parties. Any participant may terminate its participation upon notification to all other participants at least one year prior to the fiscal year end. A termination is effective as of the end of the fiscal year. Upon dissolution or termination of the Agency, the assets the Agency has purchased, or to which it has taken legal title, are to be distributed or sold, and the proceeds distributed to the participating governments in proportion to their financial support averaged over the preceding three years. Any equipment on loan from participants is to be returned.

The Agency is the primary, special purpose government responsible for emergency communications within its boundaries. The Agency is not considered a component unit of any of the participating governments. All significant activities and funds of the Agency have been included in the basic financial statements. The Agency’s financial statements represent those of a stand-alone government with no component units. The power and authority given to the Agency by the participating governments are vested in a Board of Commissioners made up of appointed officials from the participating governments. The Board has authority to select a Director who is responsible for conducting the affairs of the Agency, and works directly under the guidance of a Chief Executive Officers Board (CEO). The Agency has a two-tiered board, in which the CEO is a separate authority comprised of representatives who are elected by the participating governments and whose duties include guidance and approval of a number of Agency business elements, as well as review and recommendation of key issues to the Board of Commissioners.

B. Government-Wide and Fund Financial Statements

The government-wide financial statements (i.e., the statement of net position and the statement of activities) report information on all activities of the Agency. All activities are governmental activities which are financed primarily through 9-1-1 taxes and charges for services to other governments. There are no internal activities and therefore no eliminations are necessary to present the government-wide financial statements.

Washington County Consolidated Communications Agency

Notes to the Basic Financial Statements (Continued)

For Year Ended June 30, 2021

The statement of activities presents the degree to which direct expenses of the Agency's public safety program are offset by program revenues. Direct expenses are those that are clearly identifiable with the public safety function of the Agency. Program revenues include: (1) charges to other governments for emergency communications and services provided; (2) operating grants and contributions and (3) capital grants and contributions. 9-1-1 taxes, investment earnings and other items not properly included as program revenues are reported instead as general revenues.

C. Measurement Focus, Basis of Accounting and Financial Statement Presentation

The government-wide financial statements are reported using the economic resources measurement focus and the accrual basis of accounting. Revenues are recorded when earned and expenses are recorded when a liability is incurred, regardless of the timing of the related cash flows. 9-1-1 taxes are recognized as revenues in the year for which they are levied. Grants are recognized as revenue as soon as all eligibility requirements have been met. The Agency's contract with its participating governments calls for quarterly user fees to be paid in advance of each quarter. The full amount of the first quarter user participation fees for the ensuing fiscal year has been recorded as unearned revenue.

The governmental fund financial statements are reported using the current financial resources measurement focus and modified accrual basis of accounting. Revenues are recognized as soon as they are both measurable and available. Revenues are considered to be available when they are collectible within the current period or soon enough thereafter to pay liabilities of the current period. For this purpose, the Agency considers revenues to be available if they are collected within two months of the end of the current fiscal period. Significant revenues that are measurable and available under the modified accrual basis of accounting are user participation fees, 9-1-1 tax revenues, intergovernmental revenue and interest, and therefore have been recognized in the current fiscal period. In the current fiscal year, the first quarter user participation fees for the ensuing fiscal year (as noted above) were recorded as unearned revenue in the governmental fund financial statements as the revenue is unearned at fiscal year end.

Under the modified accrual basis of accounting, expenditures are generally recorded when a liability is incurred, as under accrual accounting. However, expenditures related to compensated absences, the transition liability, asset retirement obligation and pension and OPEB contributions are recorded only when payment is due.

Major individual governmental funds are reported as separate columns in the fund financial statements.

The Agency reports the following major governmental funds:

- The General Fund is the Agency's primary operating fund. It accounts for all financial resources of the Agency, except those required to be accounted for in another fund, either legally or by Board direction.
- The Capital Projects Fund, a capital projects fund type, accounts for the restricted revenue of the shared local option levy tax funds accumulated for Agency equipment.

Washington County Consolidated Communications Agency

Notes to the Basic Financial Statements (Continued)

For Year Ended June 30, 2021

D. Assets, Deferred Outflows of Resources, Liabilities, Deferred Inflows of Resources, and Net Position

1. Cash and Investments

The Agency's cash and investments are considered to be cash on hand, demand deposits, and short-term highly liquid investments with original maturities of three months or less from the date of acquisition. The Agency invests all available cash solely with the Oregon State Treasurer's Local Government Investment Pool. These investments are classified as a cash equivalent and are carried at cost, which approximates fair value.

2. Receivables

Receivables include member fees for 9-1-1 call taking, dispatch and maintenance services and emergency telephone system excise taxes (9-1-1). Management has determined that all receivables are fully collectible and therefore no allowance is deemed necessary.

3. Prepaids

In both government-wide and fund financial statements, certain payments are presented as a prepaid asset. These payments reflect costs applicable to future accounting periods which are recorded as prepaid expenses. The cost of prepaid items is recorded as expenditures/expenses when consumed rather than when purchased.

4. Inventory

Inventory consists of radios purchased as part of the radio infrastructure upgrade, held as future replacements for radios currently in service.

5. Net OPEB Asset

Other assets consist of assets exceeding liabilities related to PERS Retiree Health Insurance Account (RHIA) benefits. Deferred outflows and inflows related to RHIA are included in deferred amounts related to OPEB on the statement of net position.

6. Unearned Revenue

Participating governments pay quarterly user fees for services in advance of each quarter. Unearned revenue includes the amount of prepaid user fees outstanding at year-end.

7. Capital Assets

Capital assets are stated at cost. Donated assets are recorded at acquisition value at the date of donation. The Agency defines capital assets as assets with an initial cost of more than \$5,000 and an estimated useful life of greater than one year. Replacements which improve or extend the lives of property are capitalized. Maintenance, repairs and equipment replacements of a routine nature are charged to expenses/expensures as incurred and are not capitalized.

Capital assets are depreciated using the straight-line method over the following useful lives:

Leasehold improvements	15 years
Vehicles	5 years
Furniture, fixtures, and equipment	5 - 10 years

Washington County Consolidated Communications Agency

Notes to the Basic Financial Statements (Continued)

For Year Ended June 30, 2021

8. Deferred inflows of resources related to unavailable revenue

Governmental funds report deferred inflows of resources in connection with receivables for revenues that are not considered to be available to liquidate liabilities of the current period.

9. Compensated Absences

Vacation. The Agency's policy permits employees to accumulate earned but unused vacation benefits, which are eligible for payment upon separation from service. The liability for such leave is reported as incurred in the government-wide financial statements. A liability for those amounts is recorded in the governmental funds only if the liability has matured as a result of employee resignations or retirements. The liability for compensated absences includes salary-related taxes and benefits, where applicable.

The balance is liquidated by the General Fund generally and is reported on the Statement of Net Position.

Sick Leave. Accumulated sick leave lapses when employees leave the employment of the Agency and, upon separation from service, no monetary obligation exists.

10. Transition Liability

The transition liability is an actuarially determined liability recorded in the statement of net position based on the Agency's entry into the OPERS State and Local Government Rate Pool. The transition liability is reduced each year by contributions to OPERS and increased for interest charged by OPERS.

11. Net Pension Liability

For purposes of measuring the net pension liability (asset), deferred outflows of resources and deferred inflows of resources related to pensions, and pension expense, information about the fiduciary net position of all state sponsored pension plans and additions to/deductions from those plans' fiduciary net position have been determined on the same basis as they are reported by the Oregon Public Employees Retirement System (OPERS). Benefit payments (including refunds of employee contributions) are recognized when due and payable in accordance with the benefit terms.

12. Other Postemployment Benefits (OPEB) Liability

The Agency's OPEB obligation is recognized as a liability and the related deferred outflow and inflow of resources and expense are actuarially determined. Benefit payments (including refunds of employee contributions) are recognized when due and payable in accordance with the benefit terms.

13. Asset Retirement Obligation

The asset retirement obligations (ARO) and deferred outflows of resources related is the liability associated with the retirement of Agency owned capital assets that have a substantial cost to the Agency. The obligation will be paid from operating income; no assets have been set aside to fund this obligation.

Washington County Consolidated Communications Agency

Notes to the Basic Financial Statements (Continued)

For Year Ended June 30, 2021

14. Net Position

Net investment in capital assets consists of capital assets net of accumulated depreciation and reduced by outstanding debt that is attributed to the acquisition, construction, or improvement of the assets.

Restricted is the amount restricted by external creditors, grantors, contributors, or laws and regulations imposed by other governments.

Unrestricted is the amount of all net position that does not meet the definition of “invested in capital assets” or “restricted” net position.

When both restricted and unrestricted resources are available for use, it is the Agency’s policy to use restricted resources first, then unrestricted resources as they are needed.

15. Fund Balances in the Governmental Fund Financial Statements.

On the balance sheet – governmental funds, assets in excess of liabilities are reported as fund balances and are segregated into separate classifications indicating the extent to which the Agency is bound to honor constraints on specific purposes for which the funds can be spent.

Non-spendable – amounts that cannot be spent because they are either not in spendable form or are legally required to be maintained intact.

Restricted – amounts that can be spent only for specific purposes because of constitutional provisions or enabling legislation or because of constraints that are externally imposed by creditors, grantors, contributors, or the laws or regulations of other governments, including the State and Federal government. The Agency has restricted amounts, shown on the Governmental Funds Balance Sheet, with the majority of it available for use to complete major capital projects.

Committed – amounts that can be used only for specific purposes determined by a formal action of the Agency Board of Commissioners (the highest level of decision-making authority). Once committed by Commissioner action (by resolution), the limitation imposed by this action remains in place until a similar action is taken to remove or revise the limitation.

Assigned – amounts that do not meet the criteria to be classified as restricted or committed but that are intended to be used for specific purposes; and any excess of non-spendable, restricted, and committed fund balance over total fund balance in a governmental fund other than the general fund. Under the Agency’s policy, the Finance Director or management staff may assign amounts for specific purposes.

Unassigned – total fund balance in the general fund in excess of non-spendable, restricted, committed, and assigned fund balance. The general fund is the only fund that can report a positive unassigned fund balance amount.

Washington County Consolidated Communications Agency

Notes to the Basic Financial Statements (Continued)

For Year Ended June 30, 2021

E. Participation Fees

The Agency generally charges the participating governments of the intergovernmental agreement an amount sufficient to cover budgeted expenditures less anticipated revenues from other sources. The Board of Commissioners sets the participating governments' fees for the ensuing fiscal year during the budget process.

II. Stewardship, compliance, and accountability

A. Budgetary Information

The Agency budgets all funds on the modified accrual basis of accounting. As an organization formed by intergovernmental agreement pursuant to Oregon Revised Statutes (ORS) Chapter 190, the Agency does not levy property taxes and is exempt from State of Oregon Local Budget Law. The Agency, however, chooses to follow the local budget law process as outlined in ORS Chapter 294.

The Board of Commissioners adopts the original budget by resolution prior to the beginning of the Agency's fiscal year (July 1 through June 30), authorizing appropriation levels for each fund. Total personnel services, materials and services, capital outlay, and other expenditures for each fund are the levels of control established by the resolution. For instances of unexpected resources from grant funds or other governments, for which the revenues are dedicated to a specific purpose, an appropriation resolution of the Board is used to increase the budget. Unexpected additional resources may be added to the budget using a supplemental budget and appropriation resolution.

Budgets may be modified by resolution of the Board of Commissioners transferring appropriation between categories. Appropriations lapse at fiscal year-end.

III. Detailed notes on all activities and funds

A. Cash and Investments

The Agency maintains separate accountability by fund for cash and investment accounts. The types of investments in which the Agency may invest are restricted by State of Oregon statutes and a Board adopted investment policy.

Cash and investments at June 30, 2021, were comprised of the following:

Deposits with financial institutions	\$	335,751
Oregon Local Government Investment Pool		7,721,429
Total cash and investments	\$	<u>8,057,180</u>

1. Deposits with Financial Institutions

Deposits with financial institutions are in a public funds checking account that is insured up to \$250,000 by the Federal Depository Insurance Corporation (FDIC). The total carrying amount of deposits at June 30, 2021, was \$335,751. The total bank balance per

Washington County Consolidated Communications Agency

Notes to the Basic Financial Statements (Continued)

For Year Ended June 30, 2021

the bank statement was \$361,101 of which \$111,101 was not insured by the FDIC as of June 30, 2021. The uninsured cash deposits are part of the Public Funds Collateralization Program. Oregon Revised Statutes (ORS) 295 governs the collateralization process for bank depositories and local governments.

ORS 295 created a shared liability structure for participating bank depositories, better protecting public funds though still not guaranteeing that all funds are 100 percent protected. In general, bank depositories are required to pledge collateral valued at least 10 percent of their quarter-end public fund deposits if they are well capitalized or 110 percent of their quarter-end public fund deposits if they are adequately capitalized, undercapitalized or assigned to pledge that amount by the Office of State Treasurer. In the event of a bank failure, the entire pool of collateral pledged by all qualified Oregon public funds bank depositories is available to repay deposits of public funds of government entities.

2. Interest Rate Risk

To limit exposure, the Agency's investment policy designates maturity limitations dependent upon whether the funds being invested are considered short-term operating funds or long-term funds. All operating funds are to have maturities not to exceed 18 months.

The Agency did not have any investments other than with the Oregon State Treasurer's Local Government Investment Pool as of June 30, 2021, which has a weighted average to maturity of 231 days as relates to the underlying investments.

3. Credit Risk

The Oregon State Treasurer's Local Government Investment Pool (LGIP) is subject to regulatory oversight by the Oregon Secretary of State and is not required to be categorized by risk. The LGIP is not rated. Cost of pool shares approximates the Agency's fair value position in the LGIP. The Agency's investment in the LGIP made up 100% of the portfolio at June 30, 2021.

The Oregon State Treasury administers the LGIP. It is an open-ended no-load diversified portfolio offered to any agency, political subdivision, or public corporation of the state that by law is made the custodian of, or has control of, any fund. The LGIP is commingled with the State's short-term funds. In seeking to best serve local governments of Oregon, the Oregon Legislature established the Oregon Short-Term Fund Board which is not registered with the U.S. Securities and Exchange Commission as an investment company. The purpose of the Board is to advise the Oregon State Treasury in the management and investment options of the LGIP.

Other permissible investments include general obligations of the United States Government and its agencies, obligations of the State of Oregon and local government securities that have a rating of A or better by Moody's Investor Service, Oregon and local commercial paper rated A-2 and P-2 or better, corporate commercial paper that are rated A-1 or P-1 or better, guaranteed banker's acceptances, certificates of deposits, and repurchase agreements. The Agency had none of these investments as of June 30, 2021.

Washington County Consolidated Communications Agency

Notes to the Basic Financial Statements (Continued)

For Year Ended June 30, 2021

4. Custodial Credit Risk

Custodial credit risk is the risk that, in the event of failure of the counterparty, the Agency will not be able to recover the value of its investments that are in the possession of an outside party. State statutes govern the Agency's investment policies. At June 30, 2021, the Agency did not have any investments exposed to custodial credit risk.

B. Capital Assets

Capital asset activity for the year ended June 30, 2021, was as follows:

	<u>Balance, June 30, 2020</u>	<u>Increases</u>	<u>Decreases</u>	<u>Balance, June 30, 2021</u>
Governmental activities:				
Capital assets, not being depreciated:				
Work in progress	\$ 23,262,989	\$ 7,432,024	\$ 2,023	\$ 30,692,990
Capital assets, being depreciated:				
Leasehold improvements	2,808,739	-	-	2,808,739
Vehicles	347,477	65,314	-	412,791
Furniture, fixtures and equipment	13,599,689	2,023	-	13,601,712
Total capital assets, being depreciated	<u>16,755,905</u>	<u>67,337</u>	<u>-</u>	<u>16,823,242</u>
Less accumulated depreciation for:				
Leasehold improvements	(2,077,377)	(177,481)	-	(2,254,858)
Vehicles	(233,157)	(38,979)	-	(272,136)
Furniture, fixtures and equipment	(12,558,834)	(305,705)	-	(12,864,539)
Total accumulated depreciation	<u>(14,869,368)</u>	<u>(522,165)</u>	<u>-</u>	<u>(15,391,533)</u>
Total capital assets being depreciated, net	<u>1,886,537</u>	<u>(454,828)</u>	<u>-</u>	<u>1,431,709</u>
Total capital assets, net of depreciation	<u>\$ 25,149,526</u>	<u>\$ 6,977,196</u>	<u>\$ 2,023</u>	<u>\$ 32,124,699</u>

Depreciation expense in the amount of \$522,165 was charged to the public safety function.

Capital assets do not include items provided by the participating governments that are currently being used by the Agency, but to which the Agency has not taken legal title under the terms of the intergovernmental agreement or other contract. The building which houses the Agency and the radio system's central electronic controller are the only two assets of this type.

On July 21, 2016, Washington County issued \$77 million of general obligation bonds to fund the replacement of the emergency communications system, including capital equipment and facilities. For the year ended June 30, 2021, related distributions received from the County were approximately \$6.7 million. In addition to distributions to the Agency, the bonds are funding the Agency's building replacement which falls under Washington County, who owns

Washington County Consolidated Communications Agency

Notes to the Basic Financial Statements (Continued)

For Year Ended June 30, 2021

the building in which the Agency operates and is in the process of planning to construct a new facility for the Agency.

C. Changes in Long-term Liabilities

	Balance, June 30, 2020	Increases	Decreases	Balance, June 30, 2021	Due within 1 year
Governmental activities:					
Compensated Absences	\$ 747,763	\$ 1,104,507	\$ 1,006,130	\$ 846,140	\$ 389,974
Transition Liability	354,153	-	35,410	318,743	40,052
OPEB Liability	501,204	39,588	-	540,792	29,691
Subtotal	<u>1,603,120</u>	<u>1,144,095</u>	<u>1,041,540</u>	<u>1,705,675</u>	<u>459,717</u>
Net Pension Liability	12,927,261	3,457,559	-	16,384,820	-
Asset Retirement Obligation	<u>2,259,672</u>	<u>-</u>	<u>-</u>	<u>2,259,672</u>	<u>-</u>
Total Governmental activity long-term liabilities	<u>\$ 16,790,053</u>	<u>\$ 4,601,654</u>	<u>\$ 1,041,540</u>	<u>\$ 20,350,167</u>	<u>\$ 459,717</u>

IV. Other information

A. Risk Management

The Agency is exposed to various risks of loss related to torts, theft or damage to and destruction of assets, errors and omissions, injuries to employees, and natural disasters. The Agency, through its General Fund, purchases commercial insurance. Deductibles are generally at \$2,500 or less with the exception of natural disasters which have different deductibles. Settled claims have not exceeded commercial coverage in any of the last three fiscal years.

B. Deferred Compensation Plan

The Agency offers its employees a deferred compensation plan created in accordance with Internal Revenue Code Section 457. There are 74 participants in this plan. The plan, available to all Agency employees, permits them to defer a portion of their salary until future years. The deferred compensation is not available to employees until termination, retirement, death, or unforeseeable emergency.

All amounts of compensation deferred under the plan are held in trust by the plan administrator for the sole benefit of the participants. As such, these amounts are not reflected in the Agency's financial statements.

Washington County Consolidated Communications Agency

Notes to the Basic Financial Statements (Continued)

For Year Ended June 30, 2021

C. Participation in Public Employees' Retirement System

Aggregate Pension Amounts - OPERS	
Pension liabilities	\$ 16,384,820
Deferred outflows of resources	5,327,504
Deferred inflows of resources	603,323
Pension expense/expenditures	3,490,487

1. Pension Plan

The Oregon Public Employees Retirement System (OPERS) is a cost-sharing, multiple-employer defined benefit plan that provides statewide defined benefit and defined contribution retirement plans for units of state government, political subdivisions, community colleges and school districts. The Agency has joined this pool. The system provides retirement and disability benefits, post-employment healthcare benefits, annual cost of living adjustments, and death benefits to plan members and beneficiaries.

Plan Description. Employees of the Agency are provided with pensions through OPERS. All benefits of OPERS are established by the legislature pursuant to ORS Chapters 238 and 238A. The authority to establish and amend the benefit provisions of the plan rests with the Oregon Legislature. OPERS produces an independently audited CAFR that can be obtained at <https://www.oregon.gov/pers/EMP/Pages/Actuarial-Financial-Information.aspx>.

2. Description of Benefit Terms

Benefits provided under Chapter 238-Tier One/Tier Two.

- a. **Pension Benefits.** The OPERS retirement allowance is payable monthly for life. It may be selected from 13 retirement benefit options. These options include survivorship benefits and lump-sum refunds. The basic benefit is based on years of service and final average salary. A percentage (1.67 percent for general service employees) is multiplied by the number of years of service and the final average salary. Benefits may also be calculated under either a formula plus annuity (for members who were contributing before August 21, 1981) or a money match computation if a greater benefit results. Monthly payments must be a minimum of \$200 per month or the member will receive a lump-sum payment of the actuarial equivalence of benefits to which he or she is entitled.

Under Senate Bill 1049, passed during the 2019 legislative session, the salary included in the determination of Final Average Salary will be limited for all members beginning in 2020. The limit will be equal to \$195,000 in 2020 and will be indexed with inflation in later year.

A member is considered vested and will be eligible at minimum retirement age for a service retirement allowance if he or she has had a contribution in each of five calendar years or has reached at least 50 years of age before ceasing employment with a participating employer. General Service employees may retire after reaching age 55. Tier One general service employee benefits are reduced if retirement occurs prior to age 58 with fewer than 30 years of service. Tier Two members are eligible for

Washington County Consolidated Communications Agency

Notes to the Basic Financial Statements (Continued)

For Year Ended June 30, 2021

full benefits at age 60. The ORS Chapter 238 Defined Benefit Pension Plan is closed to new members hired on or after August 29, 2003.

b. Death Benefits. Upon the death of a non-retired member, the beneficiary receives a lump-sum refund of the member's account balance (accumulated contributions and interest). In addition, the beneficiary will receive a lump-sum payment from employer funds equal to the account balance, provided one or more of the following conditions are met:

- Member was employed by an OPERS employer at the time of death,
- Member died within 120 days after termination of OPERS-covered employment,
- Member died as a result of injury sustained while employed in an OPERS-covered job, or
- Member was on an official leave of absence from an OPERS-covered job at the time of death.

c. Disability Benefits. A member with 10 or more years of creditable service who becomes disabled from other than duty-connected causes may receive a non-duty disability benefit. A disability resulting from a job-incurred injury or illness qualifies a member (including OPERS judge members) for disability benefits regardless of the length of OPERS-covered service. Upon qualifying for either a non-duty or duty disability, service time is computed to age 58 (55 for police and fire members) when determining the monthly benefit.

d. Benefit Changes After Retirement. Members may choose to continue participation in a variable equities investment account after retiring and may experience annual benefit fluctuations due to changes in the market value of equity investments.

Under ORS 238.360 monthly benefits are adjusted annually through cost-of-living changes. Under current law, the COLA is capped at 2.0 percent.

Benefits provided under Chapter 238A – OPSRP. OPSRP pension program provides benefits to members hired on or after August 29, 2003. This portion of the OPSRP provides a life pension funded by employer contributions. Benefits are calculated with the following formula for members who attain normal retirement age.

e. General Service. 1.5 percent is multiplied by the number of years of service and the final average salary. Normal retirement age for general service members is age 65, or age 58 with 30 years of retirement credit.

Under Senate Bill 1049, passed during the 2019 legislative session, the salary included in the determination of Final Average Salary will be limited for all members beginning in 2020. The limit will be equal to \$195,000 in 2020 and will be indexed with inflation in later year.

A member of the OPSRP pension program becomes vested on the earliest of the following dates: the date the member completes 600 hours of service in each of five calendar years, the date the member reaches normal retirement age, and, if the pension program is terminated, the date on which termination becomes effective.

Washington County Consolidated Communications Agency

Notes to the Basic Financial Statements (Continued)

For Year Ended June 30, 2021

- f. *Death Benefits.*** Upon the death of a non-retired member, the spouse or other person who is constitutionally required to be treated in the same manner as the spouse receives for life 50 percent of the pension that would otherwise have been paid to the deceased member.
- g. *Disability Benefits.*** A member who has accrued 10 or more years of retirement credits before the member becomes disabled or a member who becomes disabled due to job-related injury shall receive a disability benefit of 45 percent of the member's salary determined as of the last full month of employment before the disability occurred.
- h. *Benefit Changes After Retirement.*** Under ORS 238A.210 monthly benefits are adjusted annually through cost-of-living changes. Under current law, the cap on the COLA is 2.0 percent.

3. Actuarial Valuations

The basis for the Agency's proportion is actuarially determined by comparing the Agency's projected long-term contribution effort to the Plan with the total projected long-term contribution effort of all employers. The contribution rate for every employer has at least two major components; Normal Cost rate and Unfunded Actuarial Liability (UAL) Rate. The employer contribution rates effective July 1, 2019, through June 30, 2021, were set using the entry age normal credit actuarial cost method.

For the Tier One/Tier Two component of the PERS Defined Benefit Plan, this method produced an employer contribution rate consisting of (1) an amount for normal cost (the estimated amount necessary to finance benefits earned by the employees during the current service year), (2) an amount for the amortization of unfunded actuarial accrued liabilities, which are being amortized over a fixed period with new unfunded actuarial accrued liabilities being amortized over 20 years.

For the OPSRP Pension Program component of the PERS Defined Benefit Plan, this method produced an employer contribution rate consisting of (a) an amount for normal cost (the estimated amount necessary to finance benefits earned by the employees during the current service year), (b) an actuarially determined amount for funding a disability benefit component, and (c) an amount for the amortization of unfunded actuarial accrued liabilities, which are being amortized over a fixed period with new unfunded actuarial accrued liabilities being amortized over 16 years.

Washington County Consolidated Communications Agency

Notes to the Basic Financial Statements (Continued)

For Year Ended June 30, 2021

Actuarial Methods and Assumptions

	Pension
Valuation date	December 31, 2018
Measurement date	June 30, 2020
Experience Study	2018, published July 24, 2019
Actuarial assumptions:	
Actuarial cost method	Entry Age Normal
Inflation rate	2.50 percent
Long-term expected rate of return	7.20 percent
Discount rate	7.20 percent
Projected salary increases	3.50 percent
Cost of living adjustments (COLA)	Blend of 2.00% COLA and graded COLA (1.25%/0.15%) in accordance with <i>Moro</i> decision; blend based on service.
Mortality	<p>Healthy retirees and beneficiaries: Pub-2010 Healthy Retiree, sex-distinct, generational with Unisex, Social Security Data Scale, with job category adjustments and set-backs as described in the valuation.</p> <p>Active members: Pub-2010 Employees, sex-distinct, generational with Unisex, Social Security Data Scale, with job category adjustments and set-backs as described in the valuation.</p> <p>Active members: Pub-2010 Disabled retirees, sex-distinct, generational with Unisex, Social Security Data Scale, with job category adjustments and set-backs as described in the valuation.</p>

Actuarial valuations of an ongoing plan involve estimates of the value of projected benefits and assumptions about the probability of events far into the future. Actuarially determined amounts are subject to continual revision as actual results are compared to past expectations and new estimates are made about the future. Experience studies are performed as of December 31 of even numbered years. The methods and assumptions shown above are based on the 2018 Experience Study, which reviewed experience for the four-year period ending on December 31, 2018.

Discount Rate. The discount rate used to measure the total pension (asset)/liability was 7.20 percent for the Defined Benefit Pension Plan. The projection of cash flows used to determine the discount rate assumed that contributions from plan members and those of the contributing employers are made at the contractually required rates, as actuarially determined. Based on those assumptions, the pension plan's fiduciary net position was projected to be available to make all projected future benefit payments of current plan members. Therefore, the long-term expected rate of return on pension plan investments for the Defined Benefit Pension Plan was applied to all periods of projected benefit payments to determine the total pension liability.

Depletion Date Projection. GASB Statement No. 68 generally requires that a blended discount rate be used to measure the total pension liability. The long-term expected return on plan investments may be used to discount liabilities to the extent that the plan's Fiduciary Net Position is projected to cover benefit payments and administrative expenses. GASB Statement No. 68 does allow for alternative evaluations of projected solvency, if such evaluation can reliably be made.

Washington County Consolidated Communications Agency

Notes to the Basic Financial Statements (Continued)

For Year Ended June 30, 2021

The following circumstances justify an alternative evaluation of sufficiency for Oregon PERS:

- PERS has a formal written policy to calculate an Actuarially Determined Contribution (ADC), which is articulated in the actuarial valuation report.
- The ADC is based on a closed, layered amortization period, which means that payment of the full ADC each year will bring the plan to a 100% funded position by the end of the amortization period if future experience follows assumption.
- GASB Statement No. 68 specifies that the projections regarding future solvency assume that plan assets earn the assumed rate of return and there are no future changes in the plan provisions or actuarial methods and assumptions, which means that the projections would not reflect any adverse future experience which might impact the plan's funded position. Based on these circumstances, it is PERS' independent actuary's opinion that the detailed depletion date projections outlined in GASB Statement No. 68 would clearly indicate that the Fiduciary Net Position is always projected to be sufficient to cover benefit payments and administrative expenses.

Assumed Asset Allocation.

Asset Class/Strategy	OIC Policy Range		OIC Target Allocation	Actual Allocation ³
	Low	High		
Debt Securities	15.0%	25.0%	20.0%	20.0%
Public Equity	27.5	42.5	32.5	31.8
Real Estate	9.5	15.5	12.5	11.4
Private Equity	14.0	21.5	17.5	22.9
Alternative Investments	7.5	12.5	15.0	10.5
Opportunity Portfolio ¹	-	3.0	-	2.1
Risk Parity ²	-	2.5	2.5	1.3
Total			<u>100.0%</u>	<u>100.0%</u>

¹ Opportunity Portfolio is an investment strategy and it may be invested up to 3% of total plan net position.

² Risk Parity is a new investment strategy added to the asset allocation mix in 2019.

³ Based on the actual investment value at 6/30/2020

Long-Term Expected Rate of Return. To develop an analytical basis for the selection of the long-term expected rate of return assumption, in May 2019 the OPERS Board reviewed long-term assumptions developed by both Milliman's capital market assumptions team and the Oregon Investment Council's (OIC) investment advisors. Each asset class assumption is based on a consistent set of underlying assumptions and includes adjustment for the inflation assumption. These assumptions are not based on historical returns, but instead are based on a forward-looking capital market economic model. For more information on the Plan's portfolio, assumed arithmetic and geometric means, see PERS' audited financial statements at:

<https://www.oregon.gov/pers/Documents/Financials/CAFR/2020-CAFR.pdf>

Washington County Consolidated Communications Agency

Notes to the Basic Financial Statements (Continued)

For Year Ended June 30, 2021

Asset Class	Target Allocation*	Annual Arithmetic Return **	Compound Annual (Geometric) Return	Standard Deviation
Core Fixed Income	9.60%	4.14%	4.07%	3.90%
Short-Term Bonds	9.60	3.70	3.68	2.10
Bank/Leveraged Loans	3.60	5.40	5.19	6.85
High Yield Bonds	1.20	6.13	5.74	9.35
Large/Mid Cap US Equities	16.17	7.35	6.30	15.50
Small Cap US Equities	1.35	8.35	6.68	19.75
Micro Cap US Equities	1.35	8.86	6.79	22.10
Developed Foreign Equities	13.48	8.30	6.91	17.95
Emerging Market Equities	4.24	10.35	7.69	25.35
Non-US Small Cap Equities	1.93	8.81	7.25	19.10
Private Equity	17.50	11.95	8.33	30.00
Real Estate (Property)	10.00	6.19	5.55	12.00
Real Estate (REITS)	2.50	8.29	6.69	21.00
Hedge Fund of Funds - Diversified	1.50	4.28	4.06	6.90
Hedge Fund - Event-driven	0.38	5.89	5.59	8.10
Timber	1.13	6.36	5.61	13.00
Farmland	1.13	6.87	6.12	13.00
Infrastructure	2.25	7.51	6.67	13.85
Commodities	1.13	5.34	3.79	18.70
Assumed Inflation - Mean			2.50%	1.65%

* Based on the OIC Statement of Investment Objectives and Policy Framework for the Oregon Public Employees Retirement Fund, revised as of April 24, 2019.

** The arithmetic mean is a component that goes into calculating the geometric mean. Expected rates of return are presented using the geometric mean, which the Boards uses in setting the discount rate.

4. Contributions

OPERS funding policy provides for monthly employer contributions at actuarially determined rates. These contributions, expressed as a percentage of covered payroll, are intended to accumulate sufficient assets to pay benefits when due. This funding policy applies to the OPERS Defined Benefit Plan and the Other Postemployment Benefit Plan.

Employer contribution rates during the period were based on the December 31, 2018, actuarial valuation. The rates based on a percentage of payroll, first became effective July 1, 2019. The rates in effect for the fiscal year ended June 30, 2021, were: (1) Tier One/Tier Two – 25.22% and (2) OPSRP general service – 19.29%. The Agency's contributions for the year ended June 30, 2021, were \$1,664,823.

5. Pension Liabilities, Pension Expense, and Deferred Outflows and Inflows of Resources Related to Pension

At June 30, 2021, the Agency reported a liability of \$16,384,820 for its proportionate share of the plan net pension liability. The net pension liability was measured as of June 30, 2020, the total pension liability used to calculate the net pension liability was determined by an actuarial valuation as of December 31, 2018. The Agency's proportionate share was based on a projection of the Agency's long-term share of contributions to the pension plan relative to the projected contributions of all participating members of the cost sharing pool, actuarially determined. At June 30, 2021

Washington County Consolidated Communications Agency

Notes to the Basic Financial Statements (Continued)

For Year Ended June 30, 2021

and 2020, the Agency's proportion was 0.07507900 percent and 0.07473440 percent, respectively.

For the year ended June 30, 2021, the Agency recognized pension expense of \$3,490,487 for the defined benefit portion of the pension plan. At June 30, 2021, the Agency reported deferred outflows of resources and deferred inflows of resources related to pensions from the following sources:

	Deferred Outflows of Resources	Deferred Inflows of Resources
Differences between expected and actual experience		
Changes in assumptions	\$ 721,130	\$ -
Net differences between projected and actual earnings on investments	879,322	30,810
Changes in proportionate share	1,926,642	-
Differences between employer contributions and employer's proportionate share of system contributions	40,504	329,409
	95,083	243,104
	3,662,681	603,323
Contributions after measurement date	1,664,823	-
Total	\$ 5,327,504	\$ 603,323

Deferred outflows of resources related to pensions of \$1,664,823 resulting from Agency contributions subsequent to the measurement date will be recognized as a reduction of the net pension liability in the year ending June 30, 2022. Other amounts reported as deferred outflows and inflows of resources related to pensions will be recognized in pension expense / (income) as follows:

Year ending June 30,	Amount
2022	\$ 596,748
2023	919,359
2024	900,028
2025	638,639
2026	4,584
Total	\$ 3,059,358

Washington County Consolidated Communications Agency

Notes to the Basic Financial Statements (Continued)

For Year Ended June 30, 2021

6. Sensitivity of the Agency's Proportionate Share of the Net Pension Liability to Changes in the Discount Rate

The following represents the Agency's proportionate share of the net pension liability calculated using the discount rate of 7.2 percent, as well as what the Agency's share of the net pension liability would be if it were calculated using a discount rate that is 1 percentage point lower or 1 percentage point higher than the current rate:

	<u>1% Decrease</u>	<u>Discount Rate</u>	<u>1% Increase</u>
Agency's proportionate share of net pension liability	\$ 24,330,105	\$ 16,384,820	\$ 9,722,331

7. Pension Plan Fiduciary Net Position

Detailed information about the pension plan's fiduciary net position is available in the separately issued OPERS financial report. This report may be obtained by writing to Oregon Public Employees Retirement System, P.O. Box 23700, Tigard, OR 97281-3700, by calling (503) 598-7377, or by accessing the OPERS website at www.oregon.gov/pers.

8. OPSRP Individual Account Program (IAP)

Pension Benefits. Participants in OPERS defined benefit pension plans also participated in their defined contribution plan. An IAP member becomes vested on the date the employee account is established or on the date the rollover account was established. If the employer makes optional employer contributions for a member, the member becomes vested on the earliest of the following dates: the date the member completes 600 hours of service in each of the five previous calendar years, the date the member reaches normal retirement age, the date the IAP is terminated, the date the active member becomes disabled, or the date the active member dies.

Death Benefits. Upon the death of a non-retired member, the beneficiary receives in a lump sum the member's account balance, rollover account balance, and vested employer optional contribution account balance. If a retired member dies before the installment payments are completed, the beneficiary may receive the remaining installment payments or choose a lump-sum payment.

Contributions. The Agency has chosen to pay the employees contributions to the plan. Six percent of covered payroll is paid for general service employees. For fiscal year June 30, 2021, the Agency paid \$382,829.

Washington County Consolidated Communications Agency

Notes to the Basic Financial Statements (Continued)

For Year Ended June 30, 2021

D. Other Postemployment Benefits (OPEB)

The other postemployment benefits (OPEB) for the Agency combines two separate plans. The Agency provides an implicit rate subsidy for retiree Health Insurance Continuation (HIC) premiums (Single Employer Plan), and contributions to the State of Oregon's PERS Retirement Health Insurance Account (cost-sharing multiple-employer defined benefit plan).

The tables below present the aggregate balance of the Agency's net OPEB liability/(asset), OPEB expense, and net deferred inflows and outflows as of June 30, 2021:

Aggregate OPEB Amounts - All Plans	
OPEB liability	\$ 540,792
OPEB asset	75,962
Deferred outflows of resources	119,489
Deferred inflows of resources	72,123
OPEB expense/expenditures	36,546

Single Employer Plan

1. Plan Description

As required by ORS 243.303, the Agency provides eligible retirees under age 65 and their dependents the same health care coverage at the same premium rates as offered to active employees. The retiree is responsible for the full amount of the premiums. The Implicit Rate Subsidy Plan has no assets accumulated in a trust that meets the criteria in paragraph 4 of Statement 75. The single-employer plan is administered by City/County Insurance Services (CIS) and does not issue a separately available financial report.

As of the valuation date of July 1, 2020, the following employees were covered by the benefits terms:

Active employees	84
Inactive employees entitled to, but not yet receiving benefits	0
Inactive employees (or their beneficiaries) currently receiving benefits	5
	89

2. Total OPEB Liability, OPEB Expense, and Deferred Outflows of Resources and Deferred Inflows of Resources Related to OPEB

The Agency's total OPEB liability of \$540,792 was determined by an actuarial valuation as of July 1, 2020, and procedures were used to roll forward to the measurement date of June 30, 2020.

For the fiscal year ended June 30, 2021, the Agency recognized OPEB expense from this plan of \$36,874. At June 30, 2021, the Agency reported deferred outflows of resources and deferred inflows of resources related to this OPEB plan from the following sources:

Washington County Consolidated Communications Agency

Notes to the Basic Financial Statements (Continued)

For Year Ended June 30, 2021

	<u>Deferred Outflows of Resources</u>	<u>Deferred Inflows of Resources</u>
Differences between expected and actual experience	\$ 26,337	\$ 4,737
Changes in assumptions	<u>18,102</u>	<u>55,515</u>
	44,439	60,252
Contributions after measurement date	<u>35,852</u>	-
Total	<u>\$ 80,291</u>	<u>\$ 60,252</u>

3. Total OPEB Liability, OPEB Expense, and Deferred Outflows of Resources and Deferred Inflows of Resources Related to OPEB

Deferred outflows of resources related to OPEB of \$35,852 resulting from the Agency's contributions subsequent to the measurement date will be recognized as a reduction of the total OPEB liability in the year ending June 30, 2022. Other amounts reported as deferred inflows of resources related to OPEB will be recognized in OPEB expense as follows:

<u>Year ending June 30,</u>	<u>Amount</u>
2022	\$ (5,023)
2023	(5,023)
2024	(5,023)
2025	(5,023)
2026	(5,023)
Thereafter	<u>9,302</u>
Total	<u>\$ (15,813)</u>

4. Actuarial Assumptions and Other Inputs

The total OPEB liability in the July 1, 2020, valuation was determined using the following actuarial assumptions and other inputs, applied to all periods included in the measurement, unless otherwise specified:

Washington County Consolidated Communications Agency

Notes to the Basic Financial Statements (Continued)

For Year Ended June 30, 2021

Valuation date	July 1, 2020
Measurement date	June 30, 2020
Actuarial assumptions:	
Actuarial cost method	Entry Age Normal
Inflation rate	2.50 percent
Discount rate	2.21 percent
Projected salary increases	3.50 percent
Withdrawal, retirement, and mortality rates	December 31, 2019 Oregon PERS valuation
Election and Lapse Rates	40% of eligible employees, 60% of male members and 35% of females members, will elect spouse coverage; 5% annual lapse rate

5. Changes in the Total OPEB Liability

Balance as of June 30, 2019	\$	501,204
Changes for the year:		
Service cost		24,191
Interest on total OPEB liability		17,706
Effect of assumptions changes or inputs		37,038
Benefit payments		(39,347)
		540,792
Balance as of June 30, 2020	\$	540,792

6. Sensitivity of the Total OPEB Liability

The following presents the Agency's total OPEB liability, as well as what the liability would be if it were calculated using a discount rate that is 1 percentage point lower or 1 percentage point higher than the current discount rate. A similar sensitivity analysis is then presented for changes in the healthcare trend assumption.

Discount Rate	1% Decrease	Current Rate	1% Increase
Total OPEB liability	\$ 582,566	\$ 540,792	\$ 501,388

Healthcare Cost Trend	1% Decrease	Current Rate	1% Increase
Total OPEB liability	\$ 484,131	\$ 540,792	\$ 608,382

Oregon PERS Retirement Health Insurance Account

1. Plan Description

The Agency contributes to the PERS Retirement Health Insurance Account (RHIA) for each of its eligible employees. RHIA is a cost-sharing multiple-employer defined benefit other postemployment benefit plan administered by PERS. ORS 238.420 established this trust fund and authorizes the Oregon Legislature to establish and amend the benefit provisions. PERS issues a publicly available financial report that includes financial

Washington County Consolidated Communications Agency

Notes to the Basic Financial Statements (Continued)

For Year Ended June 30, 2021

statements and required supplementary information which can be obtained by writing to Oregon Public Employees Retirement System, PO Box 23700, Tigard, OR 97281-3700, telephone (503) 598-7377, or by URL: www.oregon.gov/pers/EMP/Pages/GASB.aspx

RHIA pays a monthly contribution toward the cost of Medicare companion health insurance premiums of eligible employees. ORS require that an amount equal to \$60 or the total monthly cost of Medicare companion health insurance premiums coverage, whichever is less, shall be paid from the RHIA established by the City, and any monthly cost in excess of \$60 shall be paid by the eligible retired member in the manner provided in ORS 238.410. The plan is closed to new entrants after January 1, 2004.

2. Net OPEB Asset/Liability, OPEB Expense, and Deferred Outflows of Resources and Deferred Inflows of Resources Related to OPEB

At June 30, 2021, the Agency reported an asset of \$75,962 for its proportionate share of the net OPEB asset. The net OPEB asset was measured as of June 30, 2020, and the total OPEB liability used to calculate the net OPEB asset was determined by an actuarial valuation date as of December 31, 2018. The Agency's proportionate share of the RHIA net OPEB asset has been determined based on the Agency's contributions to the RHIA program (as reported by PERS) during the measurement period ending on the corresponding measurement date. The Agency's proportionate share at June 30, 2021 and June 30, 2020, was 0.03727997% and 0.06624451%, respectively.

For the year ended June 30, 2021, the Agency recognized income of \$3,210. At June 30, 2021, the Agency reported deferred outflows and deferred inflows of resources related to the OPEB from the following:

	Deferred Outflows of Resources	Deferred Inflows of Resources
Differences between expected and actual experience		
Changes in assumptions	\$ -	\$ 7,765
Net differences between projected and actual earnings on investments	8,448	-
Changes in proportionate share	29,556	68
	38,004	11,871
Contributions after measurement date	1,194	-
Total	\$ 39,198	\$ 11,871

Of the deferred outflows of resources amount above, \$1,194 is reported is resulting from Agency contributions following the measurement date will be recognized as a reduction of net OPEB liability/asset in the year ended June 30, 2022. Other amounts reported as

Washington County Consolidated Communications Agency

Notes to the Basic Financial Statements (Continued)

For Year Ended June 30, 2021

deferred outflows and deferred inflows of resources reported as OPEB will be recognized in OPEB expense/income as follows:

<u>Year ending June 30,</u>	<u>Amount</u>
2022	\$ 7,931
2023	12,414
2024	3,123
2025	2,665
2026	-
Thereafter	-
Total	<u>\$ 26,133</u>

3. Actuarial Assumptions and Other Inputs

The total OPEB liability in the December 31, 2018, valuation was determined using the following actuarial assumptions and other inputs, applied to all periods included in the measurement, unless otherwise specified:

Actuarial Methods and Assumptions

	<u>RHIA OPEB Plan</u>
Valuation date	December 31, 2018
Measurement date	June 30, 2020
Actuarial assumptions:	
Actuarial cost method	Entry Age Normal
Inflation rate	2.50 percent
Long-term expected rate of return	7.20 percent
Discount rate	7.20 percent
Projected salary increases	3.50 percent
Experience Study	2018, publish July 24, 2019
Retiree healthcare participation	Health retirees: 32% Disabled retirees: 20%
Mortality	<p>Healthy retirees and beneficiaries: RP-20110 Healthy Retiree, sex-distinct, generational with Unisex, Social Security Data Scale, with job category adjustments and set-backs as described in the valuation.</p> <p>Active members: RP-2010 Employees, sex-distinct, generational with Unisex, Social Security Data Scale, with job category adjustments and set-backs as described in the valuation.</p> <p>Active members: RP-2010 Disabled retirees, sex-distinct, generational with Unisex, Social Security Data Scale, with job category adjustments and set-backs as described in the valuation.</p>

Washington County Consolidated Communications Agency

Notes to the Basic Financial Statements (Continued)

For Year Ended June 30, 2021

4. Discount Rate

The discount rate used to measure the total OPEB liability at June 30, 2020 was 7.20%. The projection of cash flows used to determine the discount rate assumed that contributions from contributing employers are made at the contractually required rates, as actuarially determined. Based on those assumptions, the RHIA plan's fiduciary net position was projected to be available to make all projected future benefit payment of current plan members. Therefore, the long-term expected rate of return on OPEB plan investments for the RHIA plan was applied to all periods of projected benefit payments to determine the total OPEB liability

5. Depletion Date Projection

GASB 75 generally requires that a blended discount rate be used to measure the total OPEB liability. The long-term expected return on plan investments may be used to discount liabilities to the extent that the plan's fiduciary net position (fair value of assets) is projected to cover benefit payments and administrative expenses. A 20-year high quality (AA/Aa or higher) municipal bond rate must be used for periods where the fiduciary net position is not projected to cover benefit payments and administrative expenses.

6. Assumed Asset Allocation

Asset Class/Strategy	OIC Policy Range		OIC Target Allocation	Actual Allocation ³
	Low	High		
Debt Securities	15.0%	25.0%	20.0%	20.0%
Public Equity	27.5	42.5	32.5	31.8
Real Estate	9.5	15.5	12.5	11.4
Private Equity	14.0	21.5	17.5	22.9
Alternative Investments	7.5	12.5	15.0	10.5
Opportunity Portfolio ¹	-	3.0	-	2.1
Risk Parity ²	-	2.5	2.5	1.3
Total			100.0%	100.0%

¹ Opportunity Portfolio is an investment strategy and it may be invested up to 3% of total plan net position.

² Risk Parity is a new investment strategy added to the asset allocation mix in 2019.

³ Based on the actual investment value at 6/30/2020

7. Long-term Expected Rate of Return

To develop an analytical basis for the selection of the long-term expected rate of return assumption, in May 2019 the OPERS Board reviewed long-term assumptions developed by both Milliman's capital market assumptions team and the Oregon Investment Council's (OIC) investment advisors. Each asset class assumption is based on a consistent set of underlying assumptions and includes adjustment for the inflation assumption. These assumptions are not based on historical returns, but instead are based on a forward-looking capital market economic model. For more information on the Plan's portfolio, assumed arithmetic and geometric means, see PERS' audited financial statements at:

<https://www.oregon.gov/pers/Documents/Financials/CAFR/2020-CAFR.pdf>

Washington County Consolidated Communications Agency

Notes to the Basic Financial Statements (Continued)

For Year Ended June 30, 2021

Asset Class	Target Allocation*	Annual Arithmetic Return **	Compound Annual (Geometric) Return	Standard Deviation
Core Fixed Income	9.60%	4.14%	4.07%	3.90%
Short-Term Bonds	9.60	3.70	3.68	2.10
Bank/Leveraged Loans	3.60	5.40	5.19	6.85
High Yield Bonds	1.20	6.13	5.74	9.35
Large/Mid Cap US Equities	16.17	7.35	6.30	15.50
Small Cap US Equities	1.35	8.35	6.68	19.75
Micro Cap US Equities	1.35	8.86	6.79	22.10
Developed Foreign Equities	13.48	8.30	6.91	17.95
Emerging Market Equities	4.24	10.35	7.69	25.35
Non-US Small Cap Equities	1.93	8.81	7.25	19.10
Private Equity	17.50	11.95	8.33	30.00
Real Estate (Property)	10.00	6.19	5.55	12.00
Real Estate (REITS)	2.50	8.29	6.69	21.00
Hedge Fund of Funds - Diversified	1.50	4.28	4.06	6.90
Hedge Fund - Event-driven	0.38	5.89	5.59	8.10
Timber	1.13	6.36	5.61	13.00
Farmland	1.13	6.87	6.12	13.00
Infrastructure	2.25	7.51	6.67	13.85
Commodities	1.13	5.34	3.79	18.70
Assumed Inflation - Mean			2.50%	1.65%

* Based on the OIC Statement of Investment Objectives and Policy Framework for the Oregon Public Employees Retirement Fund, revised as of April 24, 2019.

** The arithmetic mean is a component that goes into calculating the geometric mean. Expected rates of return are presented using the geometric mean, which the Boards uses in setting the discount rate.

8. Sensitivity of the Net OPEB Asset

The following presents the Agency's net OPEB asset, as well as what the asset would be if it were calculated using a discount rate that is 1 percentage point lower or 1 percentage point higher than the current discount rate. A similar sensitivity analysis is then presented for changes in the healthcare trend assumption.

	1% Decrease	Discount Rate	1% Increase
Agency's proportionate share of net OPEB asset	\$ 61,326	\$ 75,962	\$ 88,476

Washington County Consolidated Communications Agency

Notes to the Basic Financial Statements (Continued)

For Year Ended June 30, 2021

The RHIA plan is unaffected by health care cost trends since the benefit is limited to a \$60 monthly payment toward Medicare companion insurance premiums. Consequently, disclosure of a healthcare cost trend analysis is not applicable.

D. Related Party Transactions

The Agency has a lease agreement with Washington County for the central dispatch facility. The lease requires payment of one dollar per year and renews automatically unless one of the parties takes action to terminate it.

The Agency is dependent on participating governments, which are all Oregon municipal corporations, for most of its revenues. The Agency also is involved in various transactions for goods and services provided to these participating governments. These transactions are summarized as follows:

	State 9-1-1 Excise Taxes	Charges for Services		
		Fees	Maintenance	Total
Participants:				
Washington County	\$ 2,008,162	\$ 2,704,894	\$ 2,449	\$ 2,707,343
City of Hillsboro	798,432	1,872,883	631	1,873,514
Tualatin Valley Fire and Rescue	-	2,239,261	2,312	2,241,573
City of Beaverton	757,556	1,455,831	1,460	1,457,291
City of Tigard	414,987	690,930	386	691,316
City of Forest Grove	194,173	506,225	-	506,225
City of Tualatin	208,109	361,368	-	361,368
City of Sherwood	151,594	236,019	190	236,209
City of Cornelius	95,794	191,185	-	191,185
City of King City	32,564	23,908	-	23,908
Banks Fire District No. 13	-	33,171	-	33,171
City of Gaston	5,015	26,085	-	26,085
City of North Plains	25,554	14,399	-	14,399
City of Durham	14,436	11,384	-	11,384
City of Banks	14,893	8,309	348	8,657
Subtotal related party transactions	4,721,269	10,375,852	7,776	10,383,628
Non-related parties:				
Clackamas County 800 Radio Group	-	758,217	9,546	767,763
Miscellaneous other contracts	-	143,469	9,672	153,141
Subtotal non-related party transactions	-	901,686	19,217	920,904
Total	\$ 4,721,269	\$ 11,277,538	\$ 26,993	\$ 11,304,532

Washington County Consolidated Communications Agency

Notes to the Basic Financial Statements (Continued)

For Year Ended June 30, 2021

E. Asset Retirement Obligation and Implementation of New Accounting Standard

The Agency implemented GASB 83, Certain Asset Retirement Obligations, which provides reporting guidance on asset retirement obligations (AROs). An ARO is a legally enforceable liability associated with the retirement of a tangible capital asset that has a substantial cost to a government. An ARO is recognized when the liability is incurred and reasonably estimable. Incurrence of a liability requires both an internal obligating event and an external obligating event resulting from normal operations. An internal obligating event includes acquiring or placing a capital asset into operation. An external obligating event requires federal, state, or local laws or regulations, a binding contract, or issuance of a court judgement requiring specific actions to retire an asset.

The Agency operates and maintains cell towers on leased land with varying initial and renewal lease terms. Currently, the Agency does not foresee terminating these lease agreements or decommissioning these towers into the foreseeable future. However, if a lease were to terminate and Agency were to decommission these towers there are specific decommissioning requirements within the leases.

The Agency developed an estimate to support these potential decommissioning costs and presents a liability at June 30, 2021, of \$2,259,672 and a deferred outflow of \$594,471. The Agency has also recorded a change in accounting principle related to this adoption of (\$1,475,649). The obligation will be paid from operating income; no assets have been set aside to fund this obligation.

This page is intentionally left blank

Required Supplementary Information

This page is intentionally left blank.

Washington County Consolidated Communications Agency

Schedule of the Agency's Proportionate Share of the Net Pension (Asset)/Liability Last Ten Fiscal Years

Oregon Public Employee Retirement Pension Plan (OPERS)

Fiscal Year ¹ Ending June 30,	Agency's proportion of the net pension (asset)/ liability (percent)	Agency's proportionate share of the net pension (asset)/ liability	Agency's covered payroll	Agency's proportionate share of the net pension (asset)/ liability as a percentage of its covered payroll	Plan fiduciary net position as a percentage of the total pension (asset)/liability
2021	0.07507900	\$ 16,384,820	\$ 7,430,472	220.51%	75.79%
2020	0.07473440	12,927,261	7,380,533	175.15%	80.23%
2019	0.07519957	11,391,744	7,503,657	151.82	82.07
2018	0.07828842	10,553,309	7,151,402	147.57	83.12
2017	0.08516355	12,785,026	6,941,076	184.19	80.53
2016	0.09080452	5,213,506	6,761,313	77.11	91.90
2015	0.09330689	(2,115,001)	6,342,592	(33.35)	103.57
2014	0.09330689	4,761,587	6,284,821	75.76	N/A ²
2013	N/A ²	N/A ²	6,331,521	N/A ²	N/A ²
2012	N/A ²	N/A ²	6,269,826	N/A ²	N/A ²

¹ Measurement date is one year in arrears.

² Actuarial information for these earlier fiscal years is not available.

Washington County Consolidated Communications Agency

Schedule of the Agency's Pension Plan Contributions
Last Ten Fiscal Years

Oregon Public Employee Retirement Pension Plan (OPERS)

Fiscal Year Ending June 30,	Contractually required contribution	Contributions in relation to the contractually required contribution	Contribution deficiency (excess)	Agency's covered payroll	Contributions as a percentage of covered payroll
2021	\$ 1,664,823	\$ 1,664,823	\$ -	\$ 8,063,384	20.65%
2020	1,561,389	1,561,389	-	7,430,472	21.01%
2019	1,215,215	1,215,215	-	7,380,533	16.47
2018	1,188,166	1,188,166	-	7,503,657	15.83
2017	949,904	949,904	-	7,151,402	13.28
2016	924,640	924,640	-	6,941,076	13.32
2015	820,785	820,785	-	6,761,313	12.14
2014	762,490	762,490	-	6,342,592	12.02
2013	N/A ¹	N/A ¹	N/A ¹	6,284,821	N/A ¹
2012	N/A ¹	N/A ¹	N/A ¹	6,331,521	N/A ¹

¹ Actuarial information for these earlier fiscal years is not available.

Washington County Consolidated Communications Agency
 Schedule of the Changes in the Agency's Total OPEB Liability and Related Ratios
 Last Ten Fiscal Years

Implicit Rate Subsidy Plan

Fiscal Year ¹ Ending June 30,	Beginning Total OPEB Liability	Service cost	Interest	Assumption changes	Economic/ demographic (gains) or losses	Benefit payments	Ending Total OPEB Liability	Covered Employee Payroll	Total OPEB Liability as a percentage of Covered Payroll
2021	\$ 501,204	\$ 24,191	\$ 17,706	\$ 7,142	\$ 29,896	\$ (39,347)	\$ 540,792	\$ 7,430,472	7.28%
2020	480,792	21,329	18,759	15,444	-	(35,120)	501,204	7,380,533	6.79%
2019	520,009	25,257	19,123	(53,890)	(7,320)	(22,387)	480,792	7,503,657	6.41
2018	532,549	27,546	15,695	(36,837)	-	(18,944)	520,009	7,151,402	7.27
2017	N/A ²	N/A ²	N/A ²	N/A ²	N/A ²	N/A ²	532,549	6,941,076	7.67
2016	N/A ²	N/A ²	N/A ²	N/A ²	N/A ²	N/A ²	N/A ²	6,761,313	N/A ²
2015	N/A ²	N/A ²	N/A ²	N/A ²	N/A ²	N/A ²	N/A ²	6,342,592	N/A ²
2014	N/A ²	N/A ²	N/A ²	N/A ²	N/A ²	N/A ²	N/A ²	6,284,821	N/A ²
2013	N/A ²	N/A ²	N/A ²	N/A ²	N/A ²	N/A ²	N/A ²	6,331,521	N/A ²
2012	N/A ²	N/A ²	N/A ²	N/A ²	N/A ²	N/A ²	N/A ²	6,269,826	N/A ²

¹ Measurement date is one year in arrears.

² Actuarial information for these earlier fiscal years is not available.

Washington County Consolidated Communications Agency

Schedule of Proportionate Share of Net OPEB Liability/(Asset) Last Ten Fiscal Years

Fiscal Year ¹ Ending June 30,	Proportion of the OPEB pension liability/asset	Proportionate share of the net OPEB liability (asset)	Covered Payroll	Proportionate share of the OPEB liability/asset as a percentage of its covered payroll	Plan fiduciary net position as a percentage of the total OPEB liability/asset
2021	0.03727997%	\$ (75,962)	\$ 7,430,472	1.02%	150.1%
2020	0.06624451%	(128,008)	7,380,533	1.73%	144.4%
2019	0.06600722%	(73,682)	7,503,657	0.98%	124.0%
2018	0.06710024%	(28,004)	7,151,402	0.39%	108.9%
2017	0.06959268%	18,899	6,941,076	-0.27%	94.2%
2016	N/A ²	N/A ²	N/A ²	N/A ²	N/A ²
2015	N/A ²	N/A ²	N/A ²	N/A ²	N/A ²
2014	N/A ²	N/A ²	N/A ²	N/A ²	N/A ²
2013	N/A ²	N/A ²	N/A ²	N/A ²	N/A ²
2012	N/A ²	N/A ²	N/A ²	N/A ²	N/A ²

¹ Measurement date is one year in arrears.

² Actuarial information for these earlier fiscal years is not available.

Washington County Consolidated Communications Agency

Schedule of OPEB PERS RHIA Plan Contributions Last Ten Fiscal Years

Fiscal Year Ending June 30,	Contractually required contribution	Contributions in relation to the contractually required contribution	Contribution deficiency (excess)	Covered payroll	Contributions as a percentage of covered payroll
2021	\$ 1,194	\$ 1,194	\$ -	\$ 8,063,384	0.015%
2020	2,371	2,371	-	7,430,472	0.032%
2019	32,867	32,867	-	7,380,533	0.445%
2018	31,682	31,682	-	7,503,657	0.422%
2017	N/A ²	N/A ²	N/A ²	N/A ²	N/A ²
2016	N/A ²	N/A ²	N/A ²	N/A ²	N/A ²
2015	N/A ²	N/A ²	N/A ²	N/A ²	N/A ²
2014	N/A ²	N/A ²	N/A ²	N/A ²	N/A ²
2013	N/A ²	N/A ²	N/A ²	N/A ²	N/A ²
2012	N/A ²	N/A ²	N/A ²	N/A ²	N/A ²

² Actuarial information for these earlier fiscal years is not available.

Washington County Consolidated Communications Agency

Notes to Required Supplemental Information - Pension

Note 1: Information Provided

GASB 68 was implemented for the year ended December 31, 2014, therefore there is no data available for years prior to 2014. Eventually, the schedules will show ten years of data.

For purposes of measuring the net pension liability, deferred outflows of resources and deferred inflows of resources related to pensions and pension expense, information about the fiduciary net position of all state sponsored pension plans and additions to/deductions from those plans' fiduciary net position have been determined on the same basis as they are reported by the Oregon Public Employees Retirement System. For this purpose, benefit payments (including refunds of employee contributions) are recognized when due and payable in accordance with the benefit terms. Investments are reported at fair value.

Note 2: Significant Factors

Changes in Plan Provisions Subsequent to Measurement Date:

On June 11, 2019, Senate Bill 1049 was enacted by the People of the State of Oregon. The elements of the bill include a variety of policy and program changes which will affect the Agency's pension plan. Most prominent are a onetime 22-year re-amortization of the unamortized actuarial liability for Tier 1 and Tier 2 employees and contribution rate adjustments. In August 2019, a petition was filed with the Oregon Supreme Court challenging the constitutionality of certain portions of SB 1049. The Oregon Supreme Court upheld the legislation on August 6, 2020.

Changes in Assumptions

A summary of key changes implemented with the December 31, 2018 actuarial valuation which was used in the pension calculations and amounts reported for fiscal year ended June 30, 2021, along with additional detail and a comprehensive list of changes in methods and assumptions from the December 31, 2018 actuarial valuation can be found at: www.oregon.gov/pers

Note 3: Contribution Rates

Rates in effect during the periods covered by the Required Supplemental Information are below:

Period	Tier 1/Tier 2 Payroll	OPSRP General Services Payroll	OPSRP Police and Fire Payroll
7/1/2019-6/30/2021	25.22%	19.29%	23.92%
7/1/2017-6/30/2019	21.75%	14.74%	19.51%
7/1/2015-6/30/2017	17.53%	11.79%	15.90%
7/1/2013-6/30/2015	14.10%	11.78%	14.51%

Washington County Consolidated Communications Agency

Notes to Required Supplemental Information - Pension

Single Employer OPEB Plan

Changes in Assumptions

Changes of assumptions and other inputs reflect the effects of changes in the discount rate each period. The following are discount rates used during each period.

FY2019	3.87%
FY2020	3.50%
FY2021	2.21%

There are no assets accumulated in a trust that meet the criteria of GASB 75 to pay related benefits.

OPERS Retirement Health Insurance Account

Changes in Assumptions

Changes of assumptions and other inputs reflect the effects of changes in the discount rate

FY2019	7.20%
FY2020	7.20%
FY2021	7.20%

This page is intentionally left blank

Other Supplementary Information

This page is intentionally left blank.

Major Governmental Fund

Capital Projects Fund

Capital Projects Fund – Accounts for the restricted revenue of the shared local option levy tax funds accumulated to replace Agency equipment.

This page is intentionally left blank.

Washington County Consolidated Communications Agency

Capital Projects Fund
 Schedule of Revenues, Expenditures, Other Financing Sources,
 and Changes in Fund Balances - Budget and Actual
 For the Year Ended June 30, 2021

	Budgeted Amounts		Variance with Final Budget
	Original and Final	Actual	
REVENUES			
Investment earnings	\$ -	\$ 5,880	\$ 5,880
Intergovernmental	13,600,000	6,693,335	(6,906,665)
Total revenues	13,600,000	6,699,215	(6,900,785)
EXPENDITURES			
Capital outlay	13,600,000	6,324,635	7,275,365
Operating contingency	948,538	-	948,538
Total expenditures	14,548,538	6,324,635	8,223,903
Excess (deficiency) of revenues over expenditures	(948,538)	374,580	1,323,118
Fund balances, June 30, 2020	740,900	740,090	-
Fund balances, June 30, 2021	\$ (207,638)	\$ 1,114,670	\$ 1,322,308

This page is intentionally left blank.

Statistical Section

This part of the Agency's annual comprehensive financial report presents detailed information as a context for understanding what the information in the financial statements, note disclosures, and supplementary information says about the Agency's overall financial health.

Financial Trends – These schedules contain trend information to help the reader understand how the Agency's financial performance and well-being have changed over time.

Revenue Capacity – This schedule contains information to help the reader assess the Agency's most significant local revenue sources, charges for services, which are paid through contracts with participating governments.

Demographic and Economic Information – These schedules offer demographic and economic indicators to help the reader understand the environment within which the Agency's financial activities take place.

Operating Information – These schedules contain service and infrastructure data to help the reader understand how the information in the Agency's financial report relates to the services the Agency provides and the activities it performs.

Sources: Unless otherwise noted, the information in these schedules is derived from the annual comprehensive financial reports for the relevant year.

This page is intentionally left blank.

Washington County Consolidated Communications Agency

Net Position by Component Last Ten Fiscal Years

	As of June 30,									
	2012	2013	2014	Restated 2015	2016	2017	Restated 2018	2019	Restated 2020	2021
Government Activities:										
Investment in capital assets	\$ 8,294,363	\$ 6,744,329	\$ 5,113,490	\$ 3,949,524	\$ 3,616,090	\$ 4,304,180	\$ 26,423,619	\$ 39,949,800	\$ 25,149,526	\$ 32,124,699
Restricted	526,393	425,192	370,219	635,915	352,190	600,779	770,890	928,539	868,098	1,190,632
Unrestricted	3,419,368	3,944,454	(399,030)	2,211,473	(1,793,752)	(3,650,752)	(3,653,830)	(2,960,578)	(3,048,409)	(6,053,293)
Total net position	<u>\$ 12,240,124</u>	<u>\$ 11,113,975</u>	<u>\$ 5,084,679</u>	<u>\$ 6,796,912</u>	<u>\$ 2,174,528</u>	<u>\$ 1,254,207</u>	<u>\$ 23,540,679</u>	<u>\$ 37,917,761</u>	<u>\$ 22,969,215</u>	<u>\$ 27,262,038</u>

Washington County Consolidated Communications Agency

Changes in Net Position Last Ten Fiscal Years

	For the Year Ended June 30,									
	2012	2013	2014	2015	2016	2017	2018	2019	2020	2021
EXPENSES										
Public safety - dispatch service	\$ 13,301,959	\$ 12,922,456	\$ 13,607,448	\$ 11,063,282	\$ 18,152,021	\$ 15,054,499	\$ 14,993,832	\$ 13,967,529	\$ 16,488,850	\$ 18,720,797
PROGRAM REVENUES										
Charges for services	8,356,790	8,637,749	9,048,027	9,461,175	9,828,236	10,265,973	11,015,612	11,239,496	11,825,201	11,304,532
Operating grants and contributions	3,500	-	-	-	-	-	-	-	-	-
Capital grants and contributions	752,641	-	-	194,400	350,000	1,072,717	22,812,685	14,223,953	9,129,174	6,693,335
Total program revenues	9,112,931	8,637,749	9,048,027	9,655,575	10,178,236	11,338,690	33,828,297	25,463,449	20,954,375	17,997,867
Net program revenues (expense)	(4,189,028)	(4,284,707)	(4,559,421)	(1,407,707)	(7,973,785)	(3,715,809)	18,834,465	11,495,920	4,465,525	(722,930)
GENERAL REVENUES AND CONTRIBUTIONS										
9-11 taxes	2,587,085	2,585,911	2,558,815	2,556,776	2,818,260	2,905,401	3,025,198	3,116,690	3,691,750	4,721,269
Investment earnings	20,561	24,534	27,074	24,939	32,529	53,106	92,571	165,151	161,375	63,602
Miscellaneous	208,149	548,113	423,333	538,225	500,612	350,586	334,238	203,285	244,553	230,882
Total general revenues	2,815,795	3,158,558	3,009,222	3,119,940	3,351,401	3,309,093	3,452,007	3,485,126	4,097,678	5,015,753
Contributions of capital assets	-	-	-	-	-	-	-	-	(22,036,100)	-
CHANGE IN NET POSITION	\$ (1,373,233)	\$ (1,126,149)	\$ (1,550,199)	\$ 1,712,233	\$ (4,622,384)	\$ (406,716)	\$ 22,286,472	\$ 14,981,046	\$ (13,472,897)	\$ 4,292,823

Washington County Consolidated Communications Agency
Fund Balances, Governmental Funds
Last Ten Fiscal Years

	As of June 30,									
	2012	2013	2014	2015	2016	2017	2018	2019	2020	2021
GENERAL FUND										
Non-spendable	\$ -	\$ -	\$ 294,240	\$ 39,839	\$ 40,541	\$ 150,876	\$ 58,276	\$ 207,192	\$ 215,344	\$ 397,279
Unassigned	3,200,219	3,920,958	3,831,148	3,884,566	3,965,856	3,750,943	4,508,904	5,858,200	7,476,537	7,258,577
Total general fund	<u>\$ 3,200,219</u>	<u>\$ 3,920,958</u>	<u>\$ 4,125,388</u>	<u>\$ 3,924,405</u>	<u>\$ 4,006,397</u>	<u>\$ 3,901,819</u>	<u>\$ 4,567,180</u>	<u>\$ 6,065,392</u>	<u>\$ 7,691,881</u>	<u>\$ 7,655,856</u>
ALL OTHER GOVERNMENTAL FUNDS										
Restricted, reported in:										
Capital projects fund	\$ 526,393	\$ 425,192	\$ 370,219	\$ 635,915	\$ 352,190	\$ 600,777	\$ 770,890	\$ 928,539	\$ 740,090	\$ 1,114,670
Total all other governmental funds	<u>\$ 526,393</u>	<u>\$ 425,192</u>	<u>\$ 370,219</u>	<u>\$ 635,915</u>	<u>\$ 352,190</u>	<u>\$ 600,777</u>	<u>\$ 770,890</u>	<u>\$ 928,539</u>	<u>\$ 740,090</u>	<u>\$ 1,114,670</u>

Washington County Consolidated Communications Agency
Changes in Fund Balances, Governmental Funds
Last Ten Fiscal Years

	For the Year Ended June 30,									
	2012	2013	2014	2015	2016	2017	2018	2019	2020	2021
REVENUES										
Taxes	\$ 2,605,085	\$ 2,591,911	\$ 2,560,815	\$ 2,566,276	\$ 2,760,760	\$ 2,876,401	\$ 2,995,198	\$ 3,092,690	\$ 3,364,750	\$ 4,546,269
Intergovernmental	655,741	353,727	218,688	288,432	568,688	1,072,717	22,812,685	14,223,953	9,129,174	6,693,335
Investment earnings	20,561	24,534	27,075	24,939	32,529	53,106	92,571	165,151	161,375	63,602
Charges for services	8,356,789	8,637,749	9,048,027	9,461,175	9,828,236	10,265,973	11,015,612	11,239,496	11,825,201	11,304,532
Grants	-	-	-	194,400	-	-	-	-	-	-
Miscellaneous	177,408	371,289	204,645	249,793	305,570	350,586	334,238	203,285	244,553	230,882
Total revenues	11,815,584	11,979,210	12,059,250	12,785,015	13,495,783	14,618,783	37,250,304	28,924,575	24,725,053	22,838,620
EXPENDITURES										
Public safety	11,095,277	11,108,128	11,872,734	12,445,635	12,567,944	12,835,884	13,642,441	13,139,234	13,862,236	15,002,727
Capital outlay	849,921	251,544	37,059	274,667	1,129,572	1,638,890	22,772,391	14,129,480	9,424,777	7,497,338
Total expenditures	11,945,198	11,359,672	11,909,793	12,720,302	13,697,516	14,474,774	36,414,832	27,268,714	23,287,013	22,500,065
Excess (deficiency) of revenues over expenditures	(129,614)	619,538	149,457	64,713	(201,733)	144,009	835,472	1,655,861	1,438,040	338,555
OTHER FINANCING SOURCES (USES)										
Transfers in	599,093	-	-	250,000	250,000	250,000	150,000	150,000	-	-
Transfers out	(599,093)	-	-	(250,000)	(250,000)	(250,000)	(150,000)	(150,000)	-	-
Total other financing sources (uses)	-	-	-	-	-	-	-	-	-	-
Net change in fund balances	\$ (129,614)	\$ 619,538	\$ 149,457	\$ 64,713	\$ (201,733)	\$ 144,009	\$ 835,472	\$ 1,655,861	\$ 1,438,040	\$ 338,555

Washington County Consolidated Communications Agency

Principal Contract Revenue Payers Last Ten Fiscal Years

	For the Year Ended June 30,									
	2012	2013	2014	2015	2016	2017	2018	2019	2020	2021
Washington County	\$ 1,914,591	\$ 1,963,089	\$ 2,028,264	\$ 2,143,902	\$ 2,350,589	\$ 2,461,901	\$ 2,645,367	\$ 2,676,852	\$ 2,740,879	\$ 2,707,343
Tualatin Valley Fire & Rescue	1,517,951	1,556,622	1,587,534	1,666,547	1,797,370	2,055,447	2,205,483	2,258,691	2,382,372	2,241,573
City of Hillsboro	1,479,089	1,516,296	1,567,470	1,661,963	1,628,101	1,723,938	1,843,349	1,854,519	1,919,738	1,873,514
City of Beaverton	1,083,679	1,109,671	1,147,549	1,203,975	1,262,403	1,303,350	1,363,927	1,383,543	1,489,527	1,457,291
City of Tigard	550,021	562,661	572,358	602,656	583,600	585,839	640,830	661,408	715,891	691,316
City of Forest Grove	326,996	338,812	357,190	372,361	424,425	438,674	489,089	490,214	511,123	506,225
City of Tualatin	302,873	304,149	312,673	327,794	329,417	331,967	362,766	370,828	378,512	361,368
City of Sherwood	196,069	214,977	221,105	235,088	198,587	205,461	226,514	217,654	231,418	236,209
City of Cornelius	137,336	148,115	152,213	153,695	151,343	165,127	167,811	196,940	200,761	191,185
Washington County Fire District #2	58,783	59,850	62,179	64,340	64,873	-	-	-	-	-
City of Banks & Banks FD# 13	32,870	33,728	34,740	35,994	36,856	39,233	40,775	40,272	41,480	41,827
City of Gaston	23,357	24,024	24,192	24,916	25,664	26,634	27,648	25,324	26,085	26,085
City of King City	19,234	20,335	20,024	21,072	21,314	22,044	22,907	23,212	23,908	23,908
City of North Plains	12,077	11,708	12,270	12,624	12,923	15,776	13,572	13,980	14,399	14,399
City of Durham	12,052	12,412	12,784	13,168	13,564	14,076	14,388	11,384	11,384	11,384
C800 Radio Group	481,626	518,404	672,133	630,756	610,952	620,474	706,030	750,898	892,306	767,763
Total	\$ 8,148,604	\$ 8,394,853	\$ 8,784,678	\$ 9,170,851	\$ 9,511,981	\$ 10,009,941	\$ 10,770,456	\$ 10,975,719	\$ 11,579,783	\$ 11,151,390

Source: The Agency's basic financial statements, current and prior.

Washington County Consolidated Communications Agency

Demographic and Economic Statistics Last Ten Fiscal Years

For the Year Ended June 30,	Population ⁽¹⁾	Per Capita Income (Washington County) ⁽³⁾	Total Personal Income (Washington County) (in thousands) ⁽³⁾	Unemployment Rate (%) (Washington County) ⁽²⁾
2021	(A)	(A)	(A)	(A)
2020	620,080	(A)	(A)	10.3%
2019	613,410	\$ 64,043	\$ 38,527,576	3.7
2018	606,280	60,971	36,442,209	3.6
2017	595,860	57,787	34,161,728	3.7
2016	583,595	55,017	32,175,890	4.5
2015	507,510	53,899	30,877,272	5.0
2014	560,465	50,569	28,446,967	5.8
2013	550,990	46,757	25,969,097	6.6
2012	542,845	47,008	25,788,385	7.3
2011	536,370	44,414	24,026,099	7.9

(A) Information is not available at the time of this report.

Notes: Information regarding the median age and education level of the Agency's population is not available.

Sources: Estimated information provided by:

(1) Portland State University Population Research Center as of July 1st of each year.

(2) State of Oregon Employment Department as of June 30th of each year.

(3) U.S. Department of Commerce, Bureau of Economic Analysis

Washington County Consolidated Communications Agency

Major Employment Sectors Current Year and Nine Years Ago

	<u>June 2021</u>	<u>% of total</u>	<u>June 2012</u>	<u>% of total</u>
For Washington County, Oregon:				
Total nonfarm employment	294,300		251,800	
Total private	271,600		228,800	
Mining, logging and construction	18,100	6%	13,400	5%
Mining and logging	400		300	
Construction	17,700		13,100	
Manufacturing	51,700	18%	43,800	17%
Durable goods	43,900		38,500	
Computer and elec. product mfg.	29,100		26,700	
Semiconductor and elec. Comp. mfg.	25,000		21,600	
Electronic instr. Mfg	2,900		3,800	
Nondurable goods	7,800		5,300	
Trade, transportation and utilities	53,000	18%	49,700	20%
Wholesale trade	14,000		17,500	
Retail trade	31,600		28,400	
Food and beverage stores	5,900		5,300	
General merchandise stores	6,800		6,100	
Transportation, warehousing and utilities	7,400		3,800	
Information	7,300	2%	7,700	3%
Financial activities	17,600	6%	15,500	6%
Professional and business services	53,900	18%	39,100	16%
Professional and technical services	16,000		12,500	
Management of companies and enterp.	15,700		4,700	
Administration and waste services	22,200		21,900	
Education and health services	37,500	13%	31,000	12%
Leisure and hospitality	23,100	8%	21,100	9%
Other Services	9,400	3%	7,500	3%
Government	22,700	8%	23,000	9%
Federal government	900		700	
State government	2,200		2,800	
Local government	19,600		19,500	
Local education	11,400		11,800	
Local government excl education	8,200		7,700	

Source: State of Oregon Employment Department, Oregon Labor Market Information System

Washington County Consolidated Communications Agency

Principal Taxpayers Within the County Current Year and Nine Years Ago

	For year ending June 30, 2021			For year ending June 30, 2012		
	Rank	Assessed Value (thousands)	% of Total	Rank	Assessed Value (thousands)	% of Total
Intel	1	\$ 1,941,050	31.2%	1	\$ 1,316,340	34.5%
Nike, Inc.	2	1,435,298	23.1%	2	437,734	11.5%
Portland General Electric	3	819,112	13.2%	3	405,598	10.6%
Pacific Realty Associates	4	417,932	6.7%	5	299,183	7.8%
Northwest Natural Gas Co	5	408,827	6.6%	6	279,692	7.3%
Verizon Communications	6	299,376	4.8%			
Genentech Inc	7	273,304	4.4%	7	239,110	6.3%
Comcast Corporation	8	263,248	4.2%	8	223,356	5.9%
Lam Research Corporation	9	198,543	3.2%			
BV Centercal LLC	10	155,911	2.6%			
Frontier Communications				4	350,700	9.2%
Maxim Integrated Products Ltd				9	133,370	3.5%
Tektronix Inc				10	132,546	3.4%
Total		6,212,601	100.0%		3,817,629	100.0%

Source: Washington County, Oregon

Washington County Consolidated Communications Agency

Full-time Equivalent Agency Employees by Function
Last Ten Fiscal Years

	For the Year Ended June 30,									
	2012	2013	2014	2015	2016	2017	2018	2019	2020	2021
Public Safety										
Dispatchers	63.0	55.0	62.0	60.0	58.0	63.0	59.0	59.0	56.0	62.8
Operations Supervisors	6.0	6.0	6.0	6.0	7.0	6.0	6.0	5.0	5.0	9.0
Technical Services	11.9	10.5	10.5	10.5	11.9	12.9	12.9	11.5	12.5	12.4
Performance Management	4.4	5.0	4.5	4.5	4.5	4.5	4.5	3.5	-	-
Administration and Other	6.0	6.1	5.1	6.1	6.1	6.1	5.1	6.0	11.8	7.6
Total	91.3	82.6	88.1	87.1	87.5	92.5	87.5	85.0	85.3	91.7

Source: The Agency's Administration/Human Resources

Washington County Consolidated Communications Agency

Operating Indicator by Function
Last Ten Fiscal Years

	For the Year Ended June 30,									
	2012	2013	2014	2015	2016	2017	2018	2019	2020	2021
Public safety										
Dispatch service calls	360,478	469,326	457,858	493,688	505,794	507,291	515,690	514,466	480,541	441,916

Source: The Agency's Information Technology

Washington County Consolidated Communications Agency

Capital Asset Statistics by Function
Last Ten Fiscal Years

	For the Year Ended June 30,									
	2012	2013	2014	2015	2016	2017	2018	2019	2020	2021
Public Safety										
Communications Network	3	3	3	3	3	3	3	4	5	6
Radio Towers	13	13	13	13	13	13	13	16	22	22
Radios, Mobile and Portable	7,735	7,638	7,830	7,688	7,812	7,884	7,777	7,171	11,226	10,634

Source: The Agency's Radio Services

This page is intentionally left blank

**Independent Auditor's Report
on Compliance and Internal Control over
Financial Reporting Based on an Audit of
Financial Statements Performed in Accordance
with Oregon State Regulations**

This page is intentionally left blank

**INDEPENDENT AUDITOR'S REPORT ON COMPLIANCE AND INTERNAL CONTROL
OVER FINANCIAL REPORTING BASED ON AN AUDIT OF
FINANCIAL STATEMENTS PERFORMED IN ACCORDANCE WITH
OREGON STATE REGULATIONS**

Board of Commissioners
Washington County Consolidated Communications Agency
Beaverton, Oregon

We have audited the financial statements of the governmental activities and each major fund of Washington County Consolidated Communications Agency (the Agency), as of and for the year ended June 30, 2021, which collectively comprise the Agency's basic financial statements, and have issued our report thereon dated December 22, 2021. We conducted our audit in accordance with auditing standards generally accepted in the United States of America.

COMPLIANCE

As part of obtaining reasonable assurance about whether the Agency's financial statements are free of material misstatement, we performed tests of its compliance with certain provisions of laws, regulations, contracts, and grants, including the provisions of Oregon Revised Statutes as specified in Oregon Administrative Rules 162-10-000 through 162-10-330 of the *Minimum Standards for Audits of Oregon Municipal Corporations*, noncompliance with which could have a direct and material effect on the determination of financial statement amounts. However, providing an opinion on compliance with those provisions was not an objective of our audit, and accordingly, we do not express such an opinion.

We performed procedures to the extent we considered necessary to address the required comments and disclosures which included, but were not limited to the following:

- Deposit of public funds with financial institutions (ORS Chapter 295).
- Insurance and fidelity bonds in force or required by law.
- Programs funded from outside sources.
- Authorized investment of surplus funds (ORS Chapter 294).
- Public contracts and purchasing (ORS Chapters 279A, 279B, 279C).

In connection with our testing, nothing came to our attention that caused us to believe the Agency was not in substantial compliance with certain provisions of laws, regulations, contracts, and grants, including the provisions of Oregon Revised Statutes as specified in Oregon Administrative Rules 162-10-000 through 162-10-330 of the *Minimum Standards for Audits of Oregon Municipal Corporations*.

INTERNAL CONTROL OVER FINANCIAL REPORTING

In planning and performing our audit of the financial statements, we considered the Agency's internal control over financial reporting to determine the audit procedures that are appropriate in the circumstances for the purpose of expressing our opinions on the financial statements, but not for the purpose of expressing an opinion on the effectiveness of the Agency's internal control. Accordingly, we do not express an opinion on the effectiveness of the Agency's internal control.

A deficiency in internal control exists when the design or operation of a control does not allow management or employees in the normal course of performing their assigned functions, to prevent, or detect and correct misstatements on a timely basis. *A material weakness* is a deficiency, or combination of deficiencies, in internal control, such that there is a reasonable possibility that a material misstatement of the entity's financial statements will not be prevented or detected and corrected on a timely basis. *A significant deficiency* is a deficiency, or a combination of deficiencies, in internal control that is less severe than a material weakness, yet important enough to merit attention by those charged with governance.

Our consideration of internal control was for the limited purpose described in the first paragraph of this section and was not designed to identify all deficiencies in internal control that might be material weaknesses or significant deficiencies and therefore, material weaknesses or significant deficiencies may exist that have not been identified. Given these limitations, during our audit we did not identify any deficiencies in internal control that we consider to be material weaknesses.

PURPOSE OF THIS REPORT

This report is intended solely for the information and use of the Board of Commissioners, Oregon Secretary of State Audits Division, and management and is not intended to be and should not be used by anyone other than these specified parties.



Portland, Oregon
December 22, 2021